

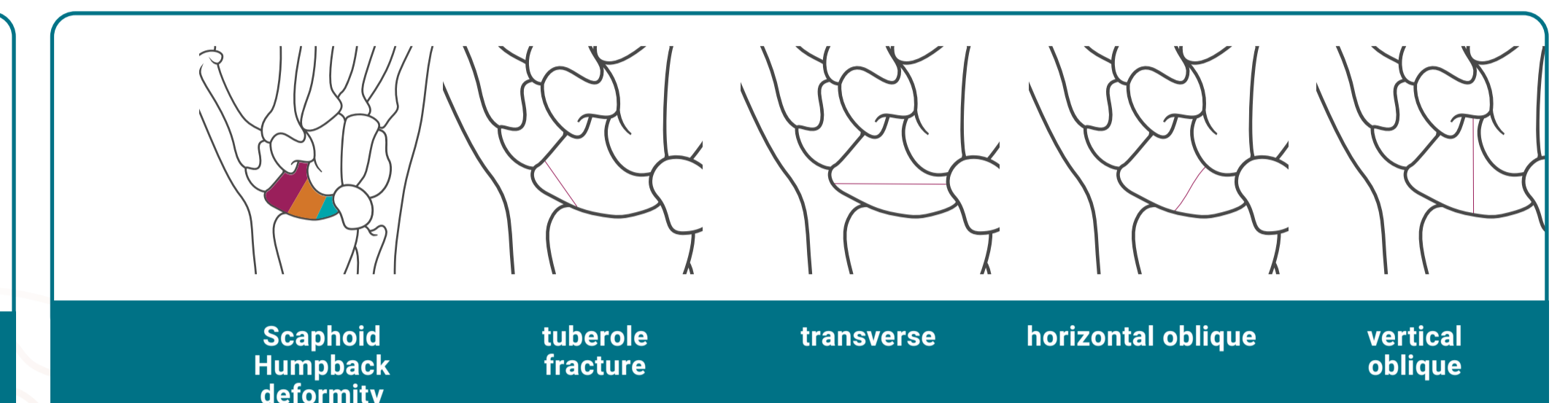
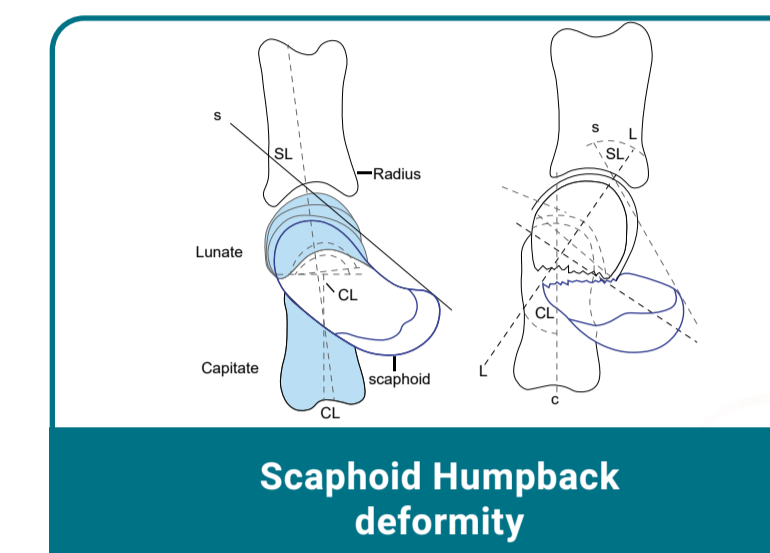
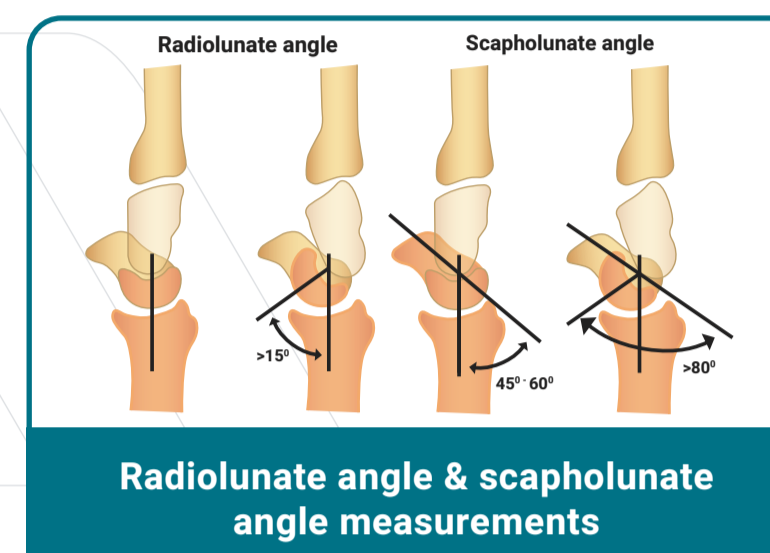
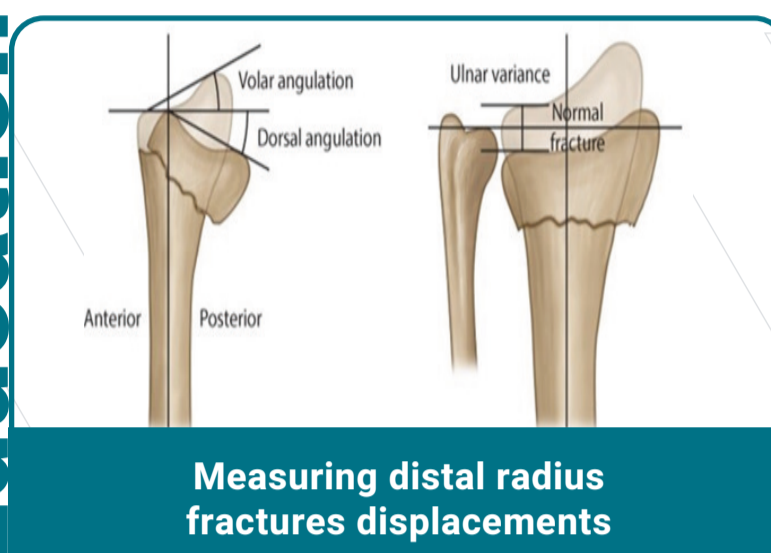


# Emergency fractures Quick reference

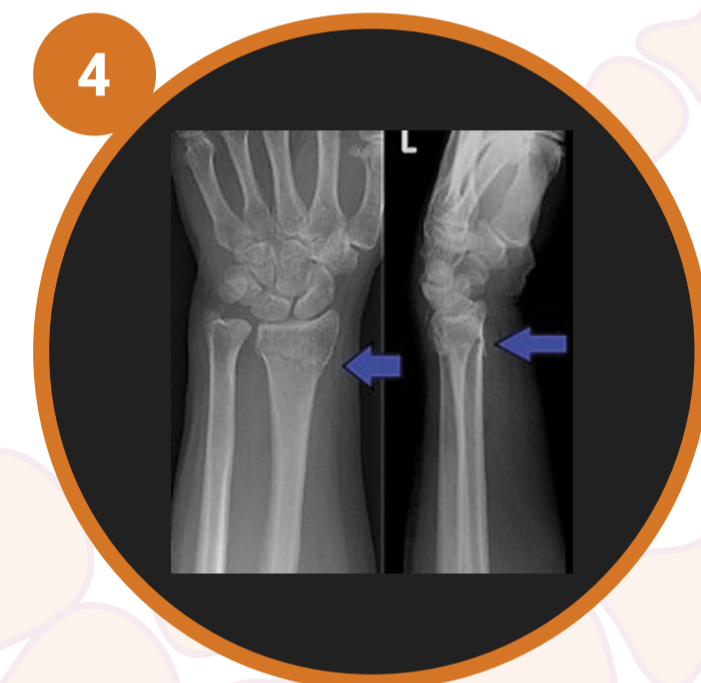
All open injuries and/or injuries with neurovascular compromise need discussion with appropriate team (orthopaedics or plastics)

## UPPER LIMB | Wrist

### Education



**1**  
**Clinically suspected scaphoid fracture:** Clinically suspected scaphoid injury  
**ASB tenderness, axial loading tenderness or tenderness on scaphoid tubercle**  
**Immobilisation:** Thumb spica futuro wrist splint  
**Follow up:** Orthopaedics OPD



**4**  
**Uncomplicated distal radius/ulnar fractures**  
• Minimally displaced distal 1/3 fractures: <20° dorsal angulation or <10° volar angulation & <5mm radial shortening  
• Extra-articular fractures  
**Immobilisation:** Dorsal backslab  
**Follow up:** Orthopaedics OPD  
**Red flag:** intra-articular component (Barton's) (discuss with orthos)



**2**  
**Uncomplicated scaphoid fracture:** Non-displaced scaphoid fracture  
**Immobilisation:** Thumb spica backslab  
**Follow up:** Orthopaedics OPD  
**Red flag:** non-displaced waist fractures to be discussed with orthos



**5**  
**Complicated distal radius/ulnar fractures**  
• Displaced distal 1/3 fractures: >20° dorsal angulation or >10° volar angulation & >5mm radial shortening  
• Intra-articular (Barton's) / comminuted fractures  
• Bier's block reduction in ED  
**Discuss with orthopaedics about ORIF**  
**Immobilisation:** Dorsal backslab  
**Follow up:** Orthopaedics OPD



**3**  
**Complicated scaphoid fractures:** Displaced scaphoid fracture:  
• Proximal pole fractures displacement > 1mm  
• 15° scaphoid humpback deformity  
• Scapholunate angle >60°  
• Radiolunate angle >15°  
**Discuss with orthos about ORIF**  
**Immobilisation:** Thumb spica backslab  
**Follow up:** Orthopaedics OPD



**6**  
**Galeazzi fractures**  
• Simple, wedge & complex distal 1/3 radius/ulna shaft #s and DRUJ dislocation.  
• DRUJ dislocation signs: 1-ulna styloid # 2-widening of joint on AP view 3-dorsal/volar displacement on lateral view 4-radial shortening >=5mm  
**Discuss with orthopaedics about ORIF**  
**Immobilisation:** Above elbow backslab in supination position  
**Follow up:** Orthopaedics OPD

## Treatment and intervention



**2**  
**Thumb spica backslab**  
• 30° wrist extension  
• The thumb should be maintained in a slightly flexed and abducted position as if holding a narrow cup



**4**  
**Dorsal Backslab**  
• Slight wrist palmar flexion  
• Ulnar deviation



**6**  
**Above elbow backslab in supination position**  
• 90° elbow flexion  
• Hand on supination



**1**  
**Futuro thumb spica splint**  
• kept on ED compactors