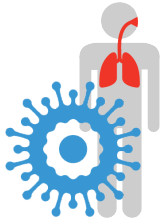




# ED COVID-19: TRIAGE SIEVE (v2.0)

## DIAGNOSTIC GROUP

## SPECIAL CASES



PROVEN OR SUSPECTED COVID (ILI = COUGH, SOB ± FEVER)

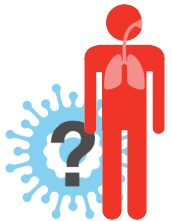
WELL? GO TO COVID CLINIC



TONSILITIS WITH COUGH OR SOB



TONSILITIS NO COUGH OR SOB



OTHER PRIMARY ISSUE + POSSIBLE COVID (MIXED CASES OR COMPLEX CASES)



PE COPD ASTHMA APO



PUO (INCLUDES FEBRILE NEUTROPENIA GO TO C23/24)



NO FEVER PE COPD ASTHMA APO



FEVER WITH CLEAR (NON RESP) FOCUS

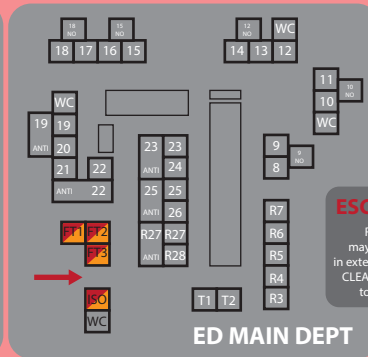
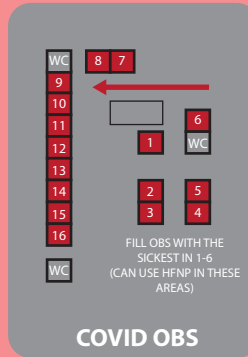
COVID UNLIKELY (NO ILI, RESPIRATORY SYMPTOMS, NO CLOSE CONTACTS)

## PREFERRED AREA (ASSESSMENT BORDERS MAY SWING)

## INITIAL LOCATION

## HOSPITAL TRAFFIC LIGHT

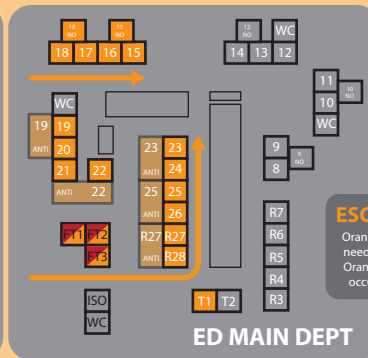
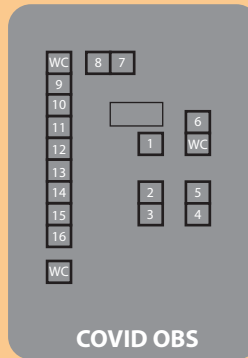
### ED RED PT



**ESCALATION**  
RED patients may need to RAMP in external holding area. CLEAN OBS relocated to external site

	AEROSOL GENERATING PROCEDURE ROOMS		OBS 1-6 (WALLED)	OBS 7-16 (UNWALLED)
	ISO	FT		
CPR	✓✓	✓	⚠ STAFF RISK	⚠ STAFF RISK
INTUBATION	✓✓	✓	✗	✗
NIV / NEB	✗	✗	✗	✗
HFNP	✓ USE OTHER LOCATION	✓✓	✓ IF NO ALTERNATIVE	✗
HEAVY SECRETIONS	✓	✓	⚠ STAFF RISK	⚠ STAFF RISK
1	✓✓	✓	✓	✓
2 3 4	✓✓	✓	✓	✓

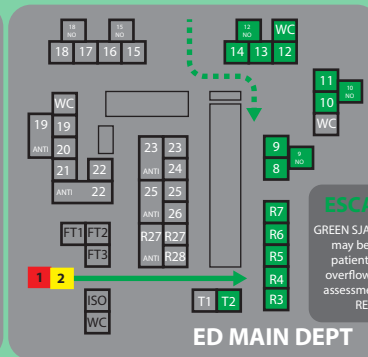
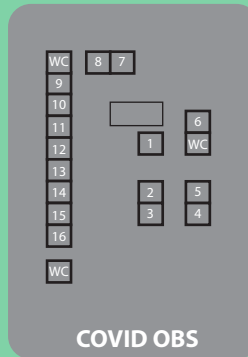
### ED ORANGE PT



**ESCALATION**  
Orange patients may need to RAMP in WR. Orange patients may occupy all ED Main

	AEROSOL GENERATING PROCEDURE ROOMS		T1	WALLED CUBICLE	NORMAL CUBICLE
	ISO	FT			
CPR	✓✓	✓	⚠ STAFF RISK	⚠ STAFF RISK	⚠ STAFF RISK
INTUBATION	✓✓	✓	⚠ STAFF RISK	✗	✗
NIV / NEB	✓ DISCUSS W/ SENIOR	✓ DISCUSS W/ SENIOR	⚠ STAFF RISK	✗	✗
HFNP	✓ USE OTHER LOCATION	✓✓	✓ IF AVAILABLE	✓ IF AVAILABLE	✗
HEAVY BODY FLUIDS	✓	✓	⚠ STAFF RISK	✗	✗
1	✗	✗	✓	✗	✗
2 3 4	✗	✗	✓	✓	✓

### ED GREEN PT



**ESCALATION**  
GREEN SJA basement RAMP may be used. ATS 3-5 patients may need to overflow to external ED assessment area. GREEN RESUS stays



**HOSPITAL RED PATIENT UNLIKELY USED FOR ED PATIENTS CONFIRMED COVID BY PCR ONLY**

**HOSPITAL ORANGE PATIENT MOST OF ED PATIENTS COVID SCREEN IF MEETS SITREP CRITERIA**

**HOSPITAL GREEN PATIENT SOME ED PATIENTS COVID NOT SUSPECTED NO SCREEN DONE**