

## Electrical Injuries: A Review For The Emergency Clinician

*As usual, the emergency department is hopping. Two minutes before change of shift, a trauma patient rolls in—an electrician in his mid-30s brought in by his coworkers. The patient, who was found unconscious near the generator he was repairing, is awake and alert but amnesic, with burns over his chest and both arms. His vital signs are within normal limits. A number of management questions enter your mind, including the need for a cardiac evaluation and hospital admission. As you begin formulating a plan, the nurse tells you that a young woman has arrived after “getting shocked” by her hair dryer, which she was using while standing on a wet bathroom floor. She has no obvious injuries or complaints other than very mild erythema of her right palm. The nurse asks if you want to order an ECG or send any blood tests.*

*It is unusual to have 2 electrical injuries in a single night. No sooner has this thought crossed your mind than the nurse announces that EMS has brought in 3 campers whose tent was struck by lightning. One camper is in cardiac arrest with ongoing resuscitation for more than 10 minutes, another has blood coming from his ears and complains of difficulty hearing, and the third has pale, mottled, and numb lower extremities. While cursing yourself for having taken a position with single physician coverage, you quickly begin triaging these patients.*

**E**lectrical injury is not a common presentation in the emergency department (ED). Nonetheless, every emergency clinician will encounter at least one case during his or her career. Electrical injuries cause 5000 patients to seek emergency treatment each year and are responsible for approximately 1000 deaths annually in the

October 2009  
Volume 11, Number 10

### Authors

**Amanda Dumler Czuczman, MD**  
Harvard Medical School, The Massachusetts General and Brigham and Women's Hospitals, Boston, MA

**Richard D. Zane, MD**  
Vice Chair, Department of Emergency Medicine, Harvard Medical School

### Peer Reviewers

**Mary Ann Cooper, MD**  
Emerita Professor, University of Illinois at Chicago, Chicago, IL

**Brian J. Daley, MD, MBA, FACS**  
Professor of Surgery, Department of Surgery, University of Tennessee Medical Center at Knoxville, Knoxville, TN

### CME Objectives

Upon completion of this article, you should be able to:

1. Identify the most serious conditions associated with electrical injury.
2. Recognize which patients require transfer and/or admission.
3. Develop an approach to treating lightning strike victims.
4. Discuss the controversies and need for more research with regard to cardiac monitoring following electrical injuries.

*Date of original release: October 1, 2009*

*Date of most recent review: May 20, 2009*

*Termination date: October 1, 2012*

*Medium: Print and online*

*Method of participation: Print or online answer form and evaluation*

*Prior to beginning this activity, see "Physician CME Information" on the back page.*

**This article is eligible for trauma CME credits.**

### Editor-in-Chief

**Andy Jagoda, MD, FACEP**  
Professor and Chair, Department of Emergency Medicine, Mount Sinai School of Medicine; Medical Director, Mount Sinai Hospital, New York, NY

### Editorial Board

**William J. Brady, MD**  
Professor of Emergency Medicine and Medicine Vice Chair of Emergency Medicine, University of Virginia School of Medicine, Charlottesville, VA

**Peter DeBlieux, MD**  
Professor of Clinical Medicine, LSU Health Science Center; Director of Emergency Medicine Services, University Hospital, New Orleans, LA

**Wyatt W. Decker, MD**  
Associate Professor of Emergency Medicine, Mayo Clinic College of Medicine, Rochester, MN

**Francis M. Fesmire, MD, FACEP**  
Director, Heart-Stroke Center, Erlanger Medical Center; Assistant Professor, UT College of Medicine, Chattanooga, TN

**Nicholas Genes, MD, PhD**  
Instructor, Department of Emergency Medicine, Mount Sinai School of Medicine, New York, NY

**Michael A. Gibbs, MD, FACEP**  
Chief, Department of Emergency Medicine, Maine Medical Center, Portland, ME

**Steven A. Godwin, MD, FACEP**  
Associate Professor, Associate Chair and Chief of Service, Department of Emergency Medicine, Assistant Dean, Simulation Education, University of Florida COM-Jacksonville, Jacksonville, FL

**Gregory L. Henry, MD, FACEP**  
CEO, Medical Practice Risk Assessment, Inc.; Clinical Professor of Emergency Medicine, University of Michigan, Ann Arbor, MI

**John M. Howell, MD, FACEP**  
Clinical Professor of Emergency Medicine, George Washington

University, Washington, DC; Director of Academic Affairs, Best Practices, Inc, Inova Fairfax Hospital, Falls Church, VA

**Keith A. Marill, MD**  
Assistant Professor, Department of Emergency Medicine, Massachusetts General Hospital, Harvard Medical School, Boston, MA

**Charles V. Pollack, Jr., MA, MD, FACEP**  
Chairman, Department of Emergency Medicine, Pennsylvania Hospital, University of Pennsylvania Health System, Philadelphia, PA

**Michael S. Radeos, MD, MPH**  
Assistant Professor of Emergency Medicine, Weill Medical College of Cornell University, New York, NY.

**Robert L. Rogers, MD, FACEP, FAAEM, FACP**  
Assistant Professor of Emergency Medicine, The University of Maryland School of Medicine, Baltimore, MD

**Alfred Sacchetti, MD, FACEP**  
Assistant Clinical Professor, Department of Emergency Medicine,

Thomas Jefferson University, Philadelphia, PA

**Scott Silvers, MD, FACEP**  
Medical Director, Department of Emergency Medicine, Mayo Clinic, Jacksonville, FL

**Corey M. Slovis, MD, FACP, FACEP**  
Professor and Chair, Division of Emergency Medicine, Vanderbilt University Medical Center, Nashville, TN

**Jenny Walker, MD, MPH, MSW**  
Assistant Professor; Division Chief, Family Medicine, Department of Community and Preventive Medicine, Mount Sinai Medical Center, New York, NY

**Ron M. Walls, MD**  
Professor and Chair, Department of Emergency Medicine, Brigham and Women's Hospital, Harvard Medical School, Boston, MA

**Scott Weingart, MD**  
Assistant Professor of Emergency Medicine, Elmhurst Hospital Center, Mount Sinai School of Medicine, New York, NY

### Research Editors

**Lisa Jacobson, MD**  
Chief Resident, Mount Sinai School of Medicine, Emergency Medicine Residency, New York, NY

### International Editors

**Peter Cameron, MD**  
Chair, Emergency Medicine, Monash University; Alfred Hospital, Melbourne, Australia

**Amin Antoine Kazzi, MD, FAAEM**  
Associate Professor and Vice Chair, Department of Emergency Medicine, University of California, Irvine; American University, Beirut, Lebanon

**Hugo Peralta, MD**  
Chair of Emergency Services, Hospital Italiano, Buenos Aires, Argentina

**Maarten Simons, MD, PhD**  
Emergency Medicine Residency Director, OLVG Hospital, Amsterdam, The Netherlands

**Accreditation:** This activity has been planned and implemented in accordance with the Essentials and Standards of the Accreditation Council for Continuing Medical Education (ACCME) through the sponsorship of EB Medicine. EB Medicine is accredited by the ACCME to provide continuing medical education for physicians. **Faculty Disclosure:** Dr. Czuczman, Dr. Zane, Dr. Cooper, Dr. Daley, and their related parties report no significant financial interest or other relationship with the manufacturer(s) of any commercial product(s) discussed in this educational presentation. **Commercial Support:** This issue of *Emergency Medicine Practice* did not receive any commercial support.

United States. They also represent 2% to 7% of all admissions to burn units.<sup>1-4</sup> Patients with electrical injuries represent a special challenge because they encompass a wide spectrum of presentations—from thermal burns to arrhythmias to spinal cord injuries—that the emergency clinician, by definition, must know how to assess and treat.

Half of electrical injuries occur in the workplace<sup>2,5</sup> and many result in litigation for negligence, product liability, or workers' compensation.<sup>6-7</sup> High-voltage injuries have the highest potential for legal consequences as they usually involve young men at the height of their earning capability.<sup>1,2,4</sup>

### Critical Appraisal Of The Literature

Few prospective randomized controlled trials have been conducted on electrical injuries, so clinical practice is based on retrospective reviews and the general burn literature. This issue of *Emergency Medicine Practice* focuses on the challenges of evaluating and managing electrical injuries using the best available evidence from the literature. PubMed® (limits: English human trial, clinical trial, meta-analysis, practice guidelines, randomized controlled trial, and review), MD Consult journals/MEDLINE®, and Ovid MEDLINE® were searched for all literature published from 1966 to 2008 using the terms *emergency AND electrical injury*. The searches provided 120 articles; 65 were reviewed and found to be relevant. Additional resources were identified using reference lists from the reviewed articles. No information was added from searches of the American College of Emergency Physicians® (ACEP) clinical practice guidelines, the National Guideline Clearinghouse™ ([www.guideline.gov](http://www.guideline.gov)), or The Cochrane Database of Systematic Reviews.

Many controversies surround the care of electrical injuries, including the role of cardiac monitoring. Practice guidelines developed by Arnoldo et al<sup>8</sup> and published in the *Journal of Burn Care and Research* in

2006 use Class II and Class III evidence and are most helpful for determining when cardiac monitoring is required. **Table 1** summarizes these guidelines.

### Etiology And Pathophysiology

Electricity is the flow of electrons. It can be expressed as voltage (V) and as current (I), which is measured in amperes (A). The obstruction to flow is the resistance (R). According to Ohm's law,  $I = V / R$ , current is directly proportional to voltage and inversely proportional to resistance. A plumbing analogy is often used: amperage is the volume of water flowing through a pipe; resistance is the diameter of the pipe; and voltage is the difference between the entrance and exit pressures of the pipe. The damage incurred during an electrical injury depends upon the voltage, the resistance of tissues, the amperage (or current strength), the type of circuit (direct or alternating current), the current pathway, and the duration of contact.<sup>3,9</sup>

The safe range of human exposure to electric currents is narrow because of the small difference between the threshold of perception of current (about 0.2 to 0.4 mA) and the "let-go current" (about 6 to 9 mA for an adult).<sup>3,10</sup> Amperage that exceeds the let-go current causes tetanic muscle contractions that prevent the release of the electrical source. (See **Table 2**). The let-go current is much more likely to be reached with exposure to alternating current (AC) than direct current (DC). Because the hand is the most common site of contact with a current source and the flexors of the upper extremity are much stronger than the extensors, when the let-go current is exceeded, the arm flexes and pulls the body closer to the source. Thoracic muscle tetany occurs just above the let-go current and causes respiratory distress. This reaction can be provoked by any electrical source, including transcutaneous electrical nerve stimulators, which caused tetanic paralysis of the chest wall and respiratory arrest in one patient.<sup>11</sup> Ventricular fibrillation is also estimated to occur at surprisingly low amperages.<sup>12-15</sup>

**Table 1. Practice Guidelines For Cardiac Monitoring After Electrical Injuries**

Characteristic	Cardiac monitoring NOT required if ALL the following are true	Cardiac monitoring IS required if ANY of the following are true
Electrocardiogram	Normal	Documented arrhythmia or evidence of ischemia
History of loss of consciousness	No	Yes
Type of injury	Low-voltage (≤ 1000 volts)	High-voltage (> 1000 volts)

**Table 2. Physiologic Effects Associated With Various Electric Current Strengths<sup>3,10</sup>**

Current Strength (mA)	Physiologic Effect
0.2 - 2	Tingling sensation perceived
3 - 5	Let-go current for a child
6 - 8	Let-go current for an adult woman
7 - 9	Let-go current for an adult man
10 - 20	Tetany (inability to release source)
20 - 50	Respiratory arrest secondary to thoracic muscle tetany
50 - 100	Ventricular fibrillation

Tissues vary in their resistance to electrical flow. Nerves, muscle, and blood vessels have a low resistance and are good conductors of electricity. Tissues that offer greater resistance are more likely to transform electrical energy into heat. For example, bone, tendon, and fat have the highest resistance and tend to heat up and coagulate.<sup>3</sup> As a consequence, internal muscle damage from electric current may be much greater than damage to more superficial muscles and soft tissues. Skin offers the primary resistance to electric current and dissipates much of the energy across its surface. Dry skin has intermediate resistance, but this is markedly reduced by moisture. Although each body tissue has a unique level of resistance, together they form a composite resistance.<sup>7</sup>

Because the body's resistance to electric current changes as the tissues break down, the only sure measure of a patient's electrical exposure is the voltage. Electrical injuries are traditionally (and arbitrarily) divided into high-voltage and low-voltage exposures. (See Table 3). A high-voltage exposure is defined as exposure to more than 1000 volts. A further distinction is made between injuries caused by high-voltage current that has direct contact with the body and flash injuries, which are caused by exposure to a high-voltage arc that stretches between the source and the victim.<sup>16</sup> The arc may generate temperatures up to 5000°C (9032°F) and ignite clothing, resulting in secondary thermal burns.<sup>17</sup> Low-voltage exposures include common household circuits in the United States and Canada, which provide 120 volts for general use and 240 volts for high-power appliances.<sup>5</sup>

**Table 3. Comparison Of High-Voltage And Low-Voltage Electrical Injuries<sup>17</sup>**

Characteristic	Low-Voltage Injury	High-Voltage Injury
Voltage, V	≤ 1000 V	> 1000 V
Type of Current	Alternating current	Alternating current or direct current
Duration of Contact	Prolonged	Brief (if direct current)
Cause of Cardiac Arrest	Ventricular fibrillation	Asystole
Cause of Respiratory Arrest	Thoracic muscle tetany	Thoracic muscle tetany or indirect trauma
Muscle contraction	Tetanic	Tetanic (if alternating current); single (if direct current)
Burns	Superficial	Deep
Rhabdomyolysis	Less common	More common
Blunt injury	Does not usually occur	Caused by falls and violent muscle contractions

It is important to distinguish between AC and DC. Most homes and offices use AC, in which electrons flow back and forth through a conductor in a cyclic fashion, standardized at a frequency of 60 cycles per second (60 Hz). Direct current is used in items such as batteries, automobile electrical systems, and high-voltage power lines. Exposure to DC causes a single muscle contraction that throws the victim away from the electrical source, whereas exposure to AC causes tetany that prolongs contact with the source, making it potentially more dangerous.<sup>17</sup>

Electrical injuries have 3 clinical presentations: (1) direct trauma from the electric current coursing through the body, (2) trauma from conversion of electrical energy to thermal energy, and (3) mechanical effects of the electric current, including violent muscle contractions and falls.<sup>18</sup> Emergent evaluation of electrical injuries should follow the traditional pathway of primary and secondary surveys, followed by a detailed and specific history and physical examination describing specific injuries by system. Table 4 summarizes multi-system injuries.

### Cutaneous Injuries

Burns are the most common injury associated with electrical accidents. Low-voltage injuries tend to create small, well-demarcated contact burns at the sites of skin entry and exit.<sup>16</sup> In high-voltage injuries, the burns are serious and appear as painless, depressed, yellow-gray, charred craters with central necrosis.<sup>3</sup> Although electrical burns often appear to be less impressive than flame burns on the surface, appearance cannot be used to predict the severity of injury. High-voltage injuries may largely spare the skin surface but cause massive damage to underlying soft tissue and bone, necessitating escharotomies, fasciotomies, or amputations.<sup>14</sup> Fortunately, this level of damage is rare after low-voltage electrical injuries. In a prospective study by Blackwell et al of 212 low-voltage electrical injuries, only 19 (9%) of the cases involved significant cutaneous injury.<sup>19</sup>

The "kissing burn" is sometimes associated with electrical injury. (See Figure 1.) This burn occurs at flexor creases such as the antecubital fossa when a current arcs across both flexor surfaces. It is important to recognize this type of injury because it is often associated with extensive underlying tissue damage.<sup>10</sup>

### Cardiac

The most serious presentation of electrical injury is cardiac arrest. It has been suggested that ventricular fibrillation is more common with low-voltage AC injuries, whereas asystole is seen more often with DC high-voltage injuries.<sup>20</sup> However, little clinical data support this claim. Other initial electrocardiogram (ECG) abnormalities reported in prospective studies include sinus tachycardia, right bundle branch block, first-degree AV block, nonspecific

ST-segment anomalies, QT-segment prolongation, and premature ventricular contractions.<sup>19,21</sup> Atrial fibrillation has also been documented in several case reports.<sup>22,23</sup>

The incidence of arrhythmias after electrical injury ranges from 4% to 17%, as evidenced in numerous prospective and retrospective studies.<sup>1,19,21,24-28</sup> Overall, exposure to low-voltage AC is most likely to cause cardiac consequences as it increases the likelihood of current flow through the heart during the vulnerable relative refractory period. The mechanism behind electrically induced cardiac arrhythmias is not entirely clear but may involve patchy areas of myocardial necrosis that serve as arrhythmogenic foci, as well as increased cardiac sodium-potassium pump activity.<sup>13</sup> Delayed arrhythmias are rare and tend to occur only in patients with an arrhythmia on presentation, as has been shown in multiple prospective and retrospective trials encompassing both low-voltage and high-voltage injuries.<sup>19,21,24-27,29,30</sup> Thus it is important to obtain an initial ECG in the ED on all patients with an electrical injury, regardless of the voltage.

Electrical exposure may cause direct myocardial tissue damage via transcardiac passage of the electric current or indirect damage via ischemic injury precipitated by arrhythmia-induced hypotension or coronary artery spasm. Direct myocardial damage is thought to be caused by electric current flowing vertically (head to foot), whereas arrhythmias are more likely to be caused by electric current flowing horizontally (hand to hand).<sup>9</sup> Myocardial functional abnormalities are demonstrated by echocardiography; this cardiac dysfunction may be either reversible or persistent.<sup>31</sup> Myocardial infarction due to acute coronary artery occlusion after electrical injury appears to be rare.<sup>32,33</sup>

**Figure 1. Kissing Burn<sup>3</sup>**



(Reprinted by permission from Elsevier. This figure was published in Rosen's Emergency Medicine Concepts and Clinical Practice, Price TG and Cooper MA, Electrical and lightning injuries, 2267-2278, Copyright © Elsevier 2006.)

Autonomic dysfunction following electrical injuries can cause serious cardiovascular complications related to the release of catecholamines. This may lead to cardiac arrest, transient hypertension, tachycardia, vasovagal syncope, thermoregulation, and vasoconstriction.<sup>34</sup> Patients with a history of vasovagal reactions may be at increased risk of sudden death from cardiac arrhythmia after an electrical injury.<sup>35</sup> Autonomic dysfunction has been implicated in keraunoparalysis, a phenomenon seen with lightning injury in which the extremities are temporarily paralyzed.<sup>34</sup>

## Respiratory

Respiratory arrest may immediately follow electric shock as a result of tetanic contraction of the thoracic musculature, injury to the respiratory control center of the central nervous system (CNS), or combined cardiopulmonary arrest secondary to asystole or ventricular fibrillation.<sup>9</sup> Cardiac function may spontaneously recover because of automaticity; however, if respiratory arrest persists, secondary hypoxia develops. Blunt chest trauma due to falls or being thrown from a high-voltage source may cause pulmonary contusion.<sup>17</sup>

## Vascular

Electrical injuries cause the greatest damage to the media layer of blood vessels and can lead to delayed aneurysm formation or rupture.<sup>10,17</sup> Damage to the intima may result in thrombosis and occlusion immediately or over several days.<sup>36</sup> Vascular injury following electrical trauma is usually most severe in the small muscle branches where the blood flow is slower; this can create tissue necrosis.<sup>37</sup> Any vascular injury can also lead to edema and compartment syndrome.

## Neurologic

High-voltage and low-voltage electrical injuries affect both the CNS and peripheral nervous system (PNS). Central nervous system lesions are more common with lightning injury, while PNS lesions are seen more often with electrical injuries. A retrospective review of 90 patients that focused on the neurologic consequences of electrical burns found that 50% of patients with low-voltage injuries and 67% of patients with high-voltage injuries had immediate neurologic symptoms.<sup>38</sup> The most common CNS symptom was loss of consciousness. Other neurologic symptoms were acute peripheral neuropathy and transient paralysis or paresthesia. However, a 20-year review by Arnoldo et al<sup>1</sup> involving 700 patients with electrical injuries showed that only 5% had acute neurologic complications, although 25% of patients went on to develop delayed neuropathies. More recently, a study of animal models has cemented a direct link between electrical injury and peripheral nerve damage.<sup>39</sup>

Spinal cord damage is the most common delayed consequence of electrical injury and may resemble lower motor neuron disease, amyotrophic lateral sclerosis, or transverse myelitis.<sup>40</sup> The incidence of spinal cord injury following high-voltage electrical trauma ranges from 2% to 27%.<sup>41</sup> This type of injury may occur when an electric current travels from arm to arm or from arm to leg, with the site of onset associated with current entry or exit.<sup>40,42</sup> In a case series that reviewed high-voltage entry sites in the head and neck, an exit site in the lower extremities led to paraplegia, whereas an exit site in the upper extremities led to quadriplegia.<sup>42</sup> Electrical injury has been proposed as a risk factor for amyotrophic lateral sclerosis; however, a recent systematic review of the literature that identified 31 articles found no support for a causal relationship.<sup>43</sup> Nevertheless, these reviews clearly support a syndrome of nonprogressive spinal cord damage after severe electrical injury. Partial or even complete recovery may occur, but delayed neurologic symptoms have an overall poor prognosis.

### Musculoskeletal

Direct electrothermal energy leading to coagulation necrosis is the main cause of muscle injury and usually occurs only after high-voltage exposures. The damaged muscle may become edematous and necrotic, resulting in rhabdomyolysis or compartment syndrome. As bone has the highest degree of resistance, severe electrothermal bone damage such as periosteal burns and osteonecrosis is seen. Falls secondary to electrical injury and forceful tetanic muscle contractions create fractures and joint dislocations. In a well-designed retrospective study spanning 20 years and 700 patients, Arnoldo et al<sup>1</sup> reported 22 cases of fractures and 68 cases of muscle necrosis following high-voltage electrical exposure.

### Renal

The kidneys are susceptible to ischemia after severe electrical injury. Muscle injury resulting in myoglobin release may also cause renal tubular damage and subsequent renal failure.

### Other

Cataracts develop in up to 6% of patients with high-voltage injuries and in many patients after lightning injury.<sup>44</sup> Cataracts may occur immediately but more often develop months after the injury.<sup>45</sup>

Hearing loss is a well-known sequela of lightning injury and may also occur after electrical injury.<sup>46</sup> Mechanisms include rupture of the eardrum by acoustic trauma, flow of electric current through the cochlea, and hemorrhage. Patients with injury to the eighth cranial nerve may also suffer from chronic tinnitus and imbalance problems. Damage to the middle or inner ear may result in infectious com-

plications including mastoiditis, sinus thrombosis, meningitis, and brain abscess.<sup>47</sup>

Victims of electrical injury often experience a wide range of neuropsychological issues including depression, cognitive dysfunction, attention problems, anxiety, and chronic pain disorders such as complex regional pain syndrome (CRPS) that may be challenging to diagnose.<sup>48,49</sup>

## Differential Diagnosis

A history of electrical exposure makes the diagnosis. However, for a person found unconscious with unwitnessed cardiac arrest, it is appropriate to keep electrical and lightning injuries in the differential if the environmental setting or weather conditions warrant.

## Prehospital Care

The primary goal during prehospital management of patients with electrical injuries is to secure the scene. The underlying theory presumes that if the victim is still in contact with the electrical source, he or she (or even the ground if it is wet) can become a conductor and electrocute the rescuer, although no published reports describe this. Before approaching the victim, medical personnel should ensure that the power source has been turned off. In high-voltage incidents, it is best to involve the local electric company. Once the scene is safe, prehospital rescuers should focus on aggressive and persistent cardiopulmonary resuscitation (CPR), even if the victim appears to be dead.<sup>51</sup> Electrical injury victims are typically young and healthy, so CPR has a higher chance of success.<sup>52</sup> When effective high-quality CPR begins immediately, patients experience a quicker resumption of spontaneous circulation and have better outcomes.<sup>52,53</sup> If

**Table 4. Summary Of Multi-system Presentations Of Electrical Injuries<sup>50</sup>**

System	Presentation
Skin	Cutaneous burns
Cardiac	Arrhythmias, cardiac arrest
Respiratory	Respiratory arrest due to muscle tetany or central nervous system causes
Vascular	Aneurysm formation, tissue ischemia
Neurologic	Loss of consciousness, transient paralysis or paresthesia, peripheral neuropathy, spinal cord injury
Musculoskeletal	Fractures or dislocations secondary to muscle spasm or falls, muscle necrosis, compartment syndrome
Renal	Myoglobinuria leading to renal failure
Other	Cataracts, neuropsychological effects

defibrillation or cardioversion is necessary, energy levels recommended by standard Advanced Cardiac Life Support (ACLS) protocols should be used (ie, no adjustment should be made because of the history of electrocution).<sup>54</sup>

Prehospital management of electrical injuries includes routine care—the patient's cervical spine is immobilized with a cervical collar and backboard, any fractures are splinted, and burns are covered with clean, dry dressings. At least one large-bore intravenous line should be established, and a fluid bolus of 10 to 20 cc/kg of normal saline or Lactated Ringer's Solution should be given to any patients with cutaneous burns or hypotension. The fluid requirements of patients with electrical injuries are generally much greater than those of patients with thermal burns. (See the Treatment section.)

Transport to the closest appropriate facility should begin after basic treatments are complete. Patients who have experienced a significant burn injury should ideally be transported or transferred to a burn center, and patients who have encountered a high-voltage injury should be taken to a trauma center.

### Emergency Department Evaluation

All electrical injuries should be evaluated and managed as multisystem injuries. Initial stabilization of patients with electrical injury should follow basic ACLS and Advanced Trauma Life Support® (ATLS) algorithms. A difficult airway evaluation is particularly important, as airway injury can progress rapidly in at-risk patients such as those with burns involving the face, mouth, or neck. Aggressive fluid resuscitation to maintain perfusion as measured by adequate urine output (1.0-1.5 cc/kg per hour) should be initiated. If heme pigment from rhabdomyolysis is present in the urine, urine output must be constantly monitored. Electrical injuries are similar to crush injuries, so formulas for fluid resuscitation based on percentage of body surface area burned are not applicable. It is critical to immediately remove any constricting objects such as rings because edema may develop quickly.

Nevertheless, some patients with low-voltage electrical injuries will be well-appearing with minimal signs of injury. These patients do not need to be rushed to the nearest ED or approached as a trauma patient. Common sense and the general appearance of the patient will go a long way in recognizing this subset of electrical injury victims.

All patients, whether exposed to low voltage or high voltage, should have an ECG done on presentation to evaluate for arrhythmias.<sup>8</sup>

### History

Patients may not be able to provide a good history because of the severity of their injuries, loss of

consciousness, or confusion. Bystanders and pre-hospital providers are a good resource regarding the electrical source, the voltage, the duration of contact, environmental factors at the scene, and resuscitative measures already provided.<sup>3</sup> Special attention should be paid to the electrical source; an injury that initially appears to have resulted from a low-voltage source (eg, a household appliance) may be due to a high-voltage source (eg, a capacitor that is contacted during repair of a television or microwave oven).<sup>10</sup> Medical history (especially cardiac problems), medications, allergies, and tetanus immunization status should also be obtained.

### Physical Examination

After a basic survey, a thorough but focused physical examination should be performed, with the size and location of any burns and the condition of the patient's extremities noted. Small, well-demarcated entry and exit wounds are often seen with low-voltage electrical injuries whereas depressed, necrotic-appearing burns are more commonly observed in high-voltage injuries. An assessment of vision and hearing should include fundoscopic and otoscopic examination. During the otoscopic examination, clinicians should look for tympanic membrane rupture, as this may be the only clue of lightning injury in a patient brought from the field.<sup>55</sup> The full range of motion of all joints should be tested to assess for fractures and dislocations. Serial neurovascular checks on all extremities are also necessary because vascular damage and delayed compartment syndrome may become apparent at any time.<sup>3,7</sup>

### Diagnostic Studies

#### Electrocardiogram

In guidelines that are based on an extensive review of the literature, Arnoldo et al<sup>8</sup> recommend that all patients receive an initial ECG to assess for cardiac injury and arrhythmias. (See Table 1, page 2.) The issue of additional cardiac monitoring is discussed in the Controversies/Cutting Edge section.

#### Laboratory Tests

Table 5 lists the laboratory tests that should be performed in patients at risk for a conductive electrical injury (ie, patients with entry and exit wounds or cardiac arrhythmia) or in patients presenting with injuries beyond minor cutaneous burns.

Serial creatine kinase (CK) levels should also be drawn in patients with high-voltage injuries, as peak CK levels predict muscle injury, risk of amputation, mortality, and length of hospital stay.<sup>56,57</sup> However, great caution should be used when interpreting cardiac markers in the setting of electrical injury. Creatine kinase myocardial isoenzyme (CK-MB) lev-

els correlate poorly with myocardial damage.<sup>56,58-60</sup> McBride et al found that among 36 victims of high-voltage electrical injury, 50% had abnormal CK-MB levels, but only 2 patients sustained myocardial infarctions according to history, ECG findings, and clinical course.<sup>60</sup> Troponin levels in electrical injuries have not been studied.

### Radiology

Victims of electrical injury should be approached as trauma patients. A head computed tomography (CT) scan to evaluate for intracranial abnormalities may be indicated in patients with electrical injury associated with a fall, persistent altered level of consciousness, or abnormal findings on neurologic examination. Plain films and/or CT scans of the spine should be ordered if a spinal injury is clinically suspected. Plain radiographs should be obtained in any area where the patient has pain, an obvious deformity, or decreased range of motion. There is a low threshold for obtaining plain films of the shoulders and pelvis, especially if these areas were in the path of the electric current, as there have been reports of delayed diagnoses of shoulder dislocations and femoral neck fractures.<sup>47,61</sup>

Late evaluation of tissue perfusion and occult muscle damage prior to surgical exploration can be done with technetium-99 pyrophosphate scintigraphy.<sup>62,63</sup> Magnetic resonance imaging with gadolinium can be a helpful adjunct to technetium-99 pyrophosphate scanning to better localize areas of muscle necrosis.<sup>62,64</sup> Although there is not enough data to recommend routine use of these imaging modalities, they can be discussed with the trauma surgeon on a case-by-case basis.

**Table 5. Laboratory Tests Recommended For Patients With Electrical Injuries**

Test	Rationale/Indication
CBC	All patients with injuries beyond minor cutaneous burns
Electrolytes	All patients with injuries beyond minor cutaneous burns
BUN and creatinine	All patients with injuries beyond minor cutaneous burns
Urinalysis	To evaluate for myoglobinuria (positive for blood but no red blood cells)
Serum myoglobin	If urinalysis is positive for myoglobinuria
Liver function tests/ amylase/lipase	If intra-abdominal injury is suspected
Coagulation profile	If intra-abdominal injury is suspected or if surgical course is projected
Blood type and screen/crossmatch	If surgical course is projected

## Treatment

### Cutaneous Injuries

Depending on transfer agreements with the local burn center, burns should be cleaned and then covered with sterile dressings. If the burns are treated locally, antibiotic dressings, such as mafenide acetate or sulfadiazine silver should be used to cover the wounds. Although scant evidence supports specific uses, mafenide acetate is preferred for localized full-thickness burns because it has better penetration, whereas sulfadiazine silver is preferred for extensive burns because it is less likely to cause electrolyte abnormalities.<sup>10</sup> Tetanus immunization status should be determined and patients vaccinated as needed. Tetanus can occur in elderly patients who have not had regular boosters and immigrants who have never received a primary immunization series. Clostridial myositis is a reported complication of electrical injuries,<sup>65</sup> but no evidence supports the use of prophylactic antibiotics.

### Management Of Injury To The Extremities

The upper extremities are frequently injured in electrical trauma and can be a source of morbidity and functional loss. A conundrum exists with such injuries: If fasciotomy and surgical exploration are not performed, deep muscle necrosis may be missed; but if they are performed unnecessarily, the patient may require multiple surgeries and have a protracted hospital and rehabilitation course. No prospective randomized controlled trials have assessed the role of immediate surgical exploration, but recent practice guidelines recommend a conservative approach, with the authors concluding that surgical decompression (ie, fasciotomy and assessment of muscle compartments) should only be performed if the patient develops progressive neurologic dysfunction, vascular compromise, increased compartment pressure, or systemic clinical deterioration due to suspected ongoing myonecrosis.<sup>8,65-74</sup> No literature has been published on the management of the lower extremities, but it seems reasonable to follow the same guidelines.

When electrothermal burns affect an upper extremity, the limb should be splinted with the wrist at 35° to 45° of extension, the metacarpophalangeal joint at 80° to 90° of flexion, and nearly full extension of the proximal and distal interphalangeal joints (Z position) to minimize the space available for edema formation.<sup>10</sup> The extremity should be kept elevated above the level of the heart to reduce edema. Frequent neurovascular checks of all extremities are crucial because compartment syndrome may become evident at any time.

Early orthopedic intervention in patients with an electrical injury and major fractures is also important. Fracture stabilization can be safely done

using internal fixation in the first 24 to 48 hours after a thermal burn.<sup>75</sup> Early fracture reduction allows for ideal stabilization, better wound care, and earlier patient mobility.

### Myoglobinuria

Myoglobinuria is a common and concerning finding in patients with electrical injuries because it places them at risk for renal failure. Fluid resuscitation should be directed at maintaining a urine output of 1.0 to 1.5 cc/kg per hour until the urine is clear of myoglobin. Acute myoglobinuric renal failure with life-threatening consequences can occur if fluid resuscitation is delayed.<sup>76</sup> Some authors advocate the use of sodium bicarbonate (1 ampule or 50 meq added to each liter of fluid) to alkalinize the urine and mannitol (25 g every 6 hours) or furosemide to supplement diuresis.<sup>1,47,77,78</sup> No evidence supports these practices, and they are mentioned here for completeness only.

### Viscera

Although it is uncommon, electrical injuries may cause injury to the abdominal organs. In a review of 226 patients with either high-voltage or low-voltage electrical injuries treated at a single burn center, 4 patients (0.4%) suffered from visceral injuries.<sup>79</sup> All 4 patients sustained high-voltage electrical injuries involving the abdomen. The colon is the most commonly injured visceral organ, though there are case reports of injury to the small intestine,<sup>80</sup> gallbladder,<sup>81,82</sup> and pancreas.<sup>83</sup> It may take 2 to 3 days post burn for the true level of visceral involvement to become clear.<sup>84</sup>

## Special Circumstances

### Lightning Injuries

Lightning strikes cause more deaths per year on average than any other storm condition except for flash floods and river floods combined.<sup>85</sup> The National Oceanic and Atmospheric Administration documented 9818 injuries and 3239 deaths due to lightning during a 36-year period in the United States, an overall mortality rate of 32%.<sup>85</sup> Certain weather conditions, namely graupel (a type of frozen precipitation that resembles snow pellets or soft hail),<sup>86</sup> indicate that lightning strikes are likely.

Lightning behaves as an instantaneous, massive, unidirectional current. It is initially transmitted internally and then flashes over the body. Its voltage may exceed 1 million volts, but it dissipates within milliseconds. Because of the brief duration, lightning strikes rarely cause significant burns or soft tissue destruction, but they are more likely to result in cardiac and respiratory arrest, neurologic sequelae, and autonomic instability. Lightning depolarizes the entire myocardium and produces asystole rather

than ventricular fibrillation. The heart's intrinsic automaticity may restore cardiac activity but concomitant respiratory arrest due to thoracic muscle spasm or central respiratory depression may produce hypoxia-induced ventricular fibrillation. Virtually everyone who is struck by lightning will survive if they do not experience cardiac or respiratory arrest. Thus, when multiple victims are present, triage should be reversed; the highest priority should be given to patients who are in cardiac or respiratory arrest or who appear to be dead.<sup>51</sup> Unlike patients with electrical injuries who may still be in contact with the electrical source, people who have been struck by lightning do not remain "charged" in any way and can be approached immediately.<sup>87</sup> Dilated, unreactive pupils are not an accurate indicator of death because of possible ocular injuries and/or autonomic instability following a lightning injury.

If a lightning strike occurs near a patient's head, it may enter the eyes, ears, or mouth. Tympanic membrane rupture frequently occurs in these patients and usually resolves without serious consequences. Permanent deafness can occur secondary to disruption of the ossicles. Ocular injuries such as corneal lesions, macular holes, vitreous hemorrhage, retinal detachment, and cataracts may occur after lightning injury.<sup>88-90</sup> Bilateral cataract formation is common, though it may not develop for months or even years after the initial injury.<sup>90</sup>

Four main types of superficial burns are seen in lightning strikes: linear, punctate, feathering, and thermal. Linear burns occur where sweat or water have accumulated (eg, in the axilla or running down the chest). Punctate burns resemble multiple small cigarette burns and often appear in a rosette pattern. "Tip-toe signs"—characteristic small, circular, full-thickness punctuate burns involving the sides of the feet and the tips of the toes—were seen in half of a group of 17 patients during a single lightning strike.<sup>91</sup> Feathering burns, also called Lichtenberg figures, are pathognomonic for lightning injury. (See Figure 2.) They usually appear within one hour of the lightning strike and fade within a few days. Feathering burns are not true burns and do not require any treatment. Thermal burns may occur if the patient's clothing catches fire or if the patient is wearing any metal objects that heat up and cause a direct burn.<sup>3</sup>

Cardiac arrest is the primary cause of mortality in lightning injury; neurologic complications are the principal cause of morbidity. Lightning-related neurologic sequelae fall into 4 categories: immediate and transient symptoms, immediate and persistent symptoms, delayed symptoms, and traumatic lesions secondary to falls.<sup>92,93</sup>

Immediate and transient neurologic symptoms include loss of consciousness, confusion, anterograde amnesia, weakness, and paresthesia. Although these symptoms are purportedly very common, sup-



porting data from retrospective reviews are sparse. In a retrospective review of 22 lightning strike victims in Turkey, only 5 complained of confusion and amnesia, though loss of consciousness was not measured.<sup>94</sup> Keraunoparalysis is a transient neurologic paralysis that is pathognomonic for lightning injury. Keraunoparalysis is characterized by lower and occasionally upper extremities that are numb, blue, mottled, cold, and pulseless. Thought to be caused by transient vasospasm and autonomic nervous system dysfunction, keraunoparalysis usually resolves on its own within a few hours.<sup>95</sup>

Immediate and persistent neurologic syndromes associated with lightning injury include hypoxic encephalopathy and intracranial hemorrhage. The usual locations of intracranial hemorrhage in lightning injury are the basal ganglia and brainstem.<sup>96-99</sup> Cerebral infarction is a rare but possible complication.<sup>100-101</sup> Delayed neurologic sequelae include motor neuron disease and movement disorders, although it is difficult to establish a clear association with lightning strikes. Traumatic falls associated with a lightning strike may result in spinal cord injury and epidural and subdural hematomas. Additionally, lightning injury survivors may experience persistent behavioral and neuropsychological effects such as memory and attention deficits, posttraumatic stress disorder (PTSD), depression, and chronic fatigue. In one case series involving patients with lightning injuries seen in a neurology clinic, neuropsychological testing revealed mild impairments in memory, attention, and visual reaction times in all 6 patients studied.<sup>102</sup> Two of the patients were also diagnosed with depression, and one showed convincing evidence of PTSD. This study was obviously limited by its small size and selection bias, but it does point out some interesting findings.

**Figure 2. Feathering Burn**



(Reprinted by permission from Elsevier. This figure was published in Rosen's Emergency Medicine Concepts and Clinical Practice, Price TG and Cooper MA, Electrical and lightning injuries, 2267-2278, Copyright © Elsevier 2006.)

Once cardiopulmonary arrest, spinal cord injury, intracranial injury, or other blunt injury have been excluded, the management of lightning victims should be supportive and symptomatic. Lightning injury is distinct from high-voltage electrical injury, and it should be treated as such to avoid iatrogenic morbidity and mortality.<sup>87</sup> Because lightning strike patients rarely sustain burns or soft tissue injuries, they generally do not require fluid resuscitation or surgical decompression of their extremities.

### Electrical Injuries In Children

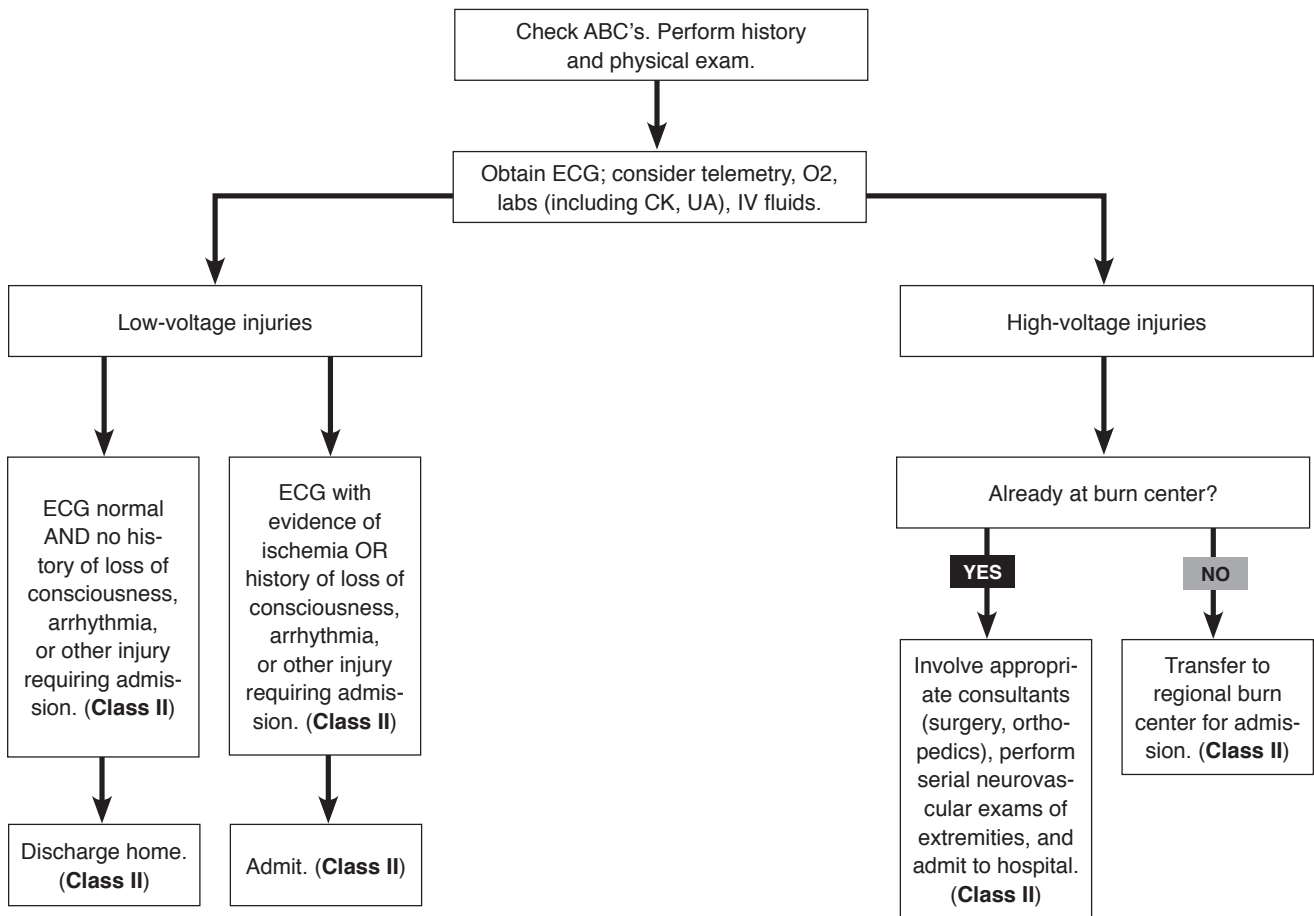
Most electrical injuries in young children occur in the home and are usually associated with electrical cords (60-70% of cases) and wall outlets (10-15% of cases).<sup>103</sup> The most common injury seen in young children is an oral arc burn, caused when the end of a live extension cord is put in the mouth or when the cord is bitten. These oral burns can be devastating and can result in injury to the commissure of the lip, the tongue, or the floor of the mouth. Electrical burns to the tongue and mouth can bleed significantly and put these patients at risk for aspiration. Swelling of the tongue and floor of the mouth may be extensive and can lead to airway obstruction. Hospital admission for airway observation or intervention and parenteral support is often required in cases of severe electrical burns to the orofacial region.<sup>104</sup>

Because of the risk to developing dentition and the possibility of a poor cosmetic outcome, patients with orofacial electrical injuries require surgical and dental consultation for oral splinting (ie, at the lip commissure), postburn debridement, and possible reconstructive surgery.<sup>3,26</sup> Severe bleeding from the labial artery occurs in about 5% to 10% of patients with oral burns when the eschar separates up to 2 weeks after the initial electrical injury.<sup>28,104</sup> Educating parents on how to control bleeding from the labial artery is crucial for outpatient management of these injuries.

In general, children experience many of the same injuries as adults following electrical trauma. The anatomical and physiologic characteristics of children, such as thinner skin, make them more susceptible to severe injuries, especially in the extremities.<sup>50</sup> Surgical consultation should be obtained early with regard to the need for debridement and fasciotomy.

Chen and Sareen<sup>103</sup> attempted to determine if cardiac monitoring is necessary in children by performing a systematic review encompassing 7 retrospective studies, each involving a minimum of 35 patients. They concluded that otherwise healthy children who are exposed to common household electric current (low-voltage, no water contact) and who are asymptomatic in the ED and have no evidence of arrhythmia or cardiac arrest in the field

# Clinical Pathway For Managing Electrical Injuries



## Class Of Evidence Definitions

Each action in the clinical pathways section of *Emergency Medicine Practice* receives a score based on the following definitions.

### Class I

- Always acceptable, safe
- Definitely useful
- Proven in both efficacy and effectiveness

#### Level of Evidence:

- One or more large prospective studies are present (with rare exceptions)
- High-quality meta-analyses
- Study results consistently positive and compelling

### Class II

- Safe, acceptable
- Probably useful

#### Level of Evidence:

- Generally higher levels of evidence
- Non-randomized or retrospective studies: historic, cohort, or case control studies
- Less robust RCTs
- Results consistently positive

### Class III

- May be acceptable
- Possibly useful
- Considered optional or alternative treatments

#### Level of Evidence:

- Generally lower or intermediate levels of evidence
- Case series, animal studies, consensus panels
- Occasionally positive results

### Indeterminate

- Continuing area of research
- No recommendations until further research

#### Level of Evidence:

- Evidence not available
- Higher studies in progress
- Results inconsistent, contradictory
- Results not compelling

Significantly modified from: The Emergency Cardiovascular Care Committees of the American Heart Association and represen-

tatives from the resuscitation councils of ILCOR: How to Develop Evidence-Based Guidelines for Emergency Cardiac Care: Quality of Evidence and Classes of Recommendations; also: Anonymous. Guidelines for cardiopulmonary resuscitation and emergency cardiac care. Emergency Cardiac Care Committee and Subcommittees, American Heart Association. Part IX. Ensuring effectiveness of community-wide emergency cardiac care. *JAMA*. 1992;268(16):2289-2295.

This clinical pathway is intended to supplement, rather than substitute for, professional judgment and may be changed depending upon a patient's individual needs. Failure to comply with this pathway does not represent a breach of the standard of care.

Copyright © 2009 EB Practice, LLC. 1-800-249-5770. No part of this publication may be reproduced in any format without written consent of EB Practice, LLC.

may be safely discharged without an initial ECG or any inpatient cardiac monitoring. Although the literature on high-voltage pediatric electrical injuries is more limited, some authors recommend admitting patients with these injuries for cardiac monitoring.<sup>28</sup>

### Electrical Injuries In Pregnant Women

The management of the pregnant woman after an electrical injury should focus on protecting the well-being of both mother and fetus. The obstetrical team should be consulted as soon as possible, and fetal heart monitoring should be initiated for any patient beyond 20 weeks' gestation. Fetal monitoring and tocodynamometry are indicated in electrical injuries that involve any mechanical trauma because of the potential for placental abruption.<sup>105</sup> Ultrasonography to assess fetal viability may also be prudent, especially if the patient experiences decreased fetal movement, vaginal bleeding, fluid leakage, or abdominal pain. Close obstetrical follow-up is mandatory if the patient is discharged. Burns have adverse effects on a pregnancy because they increase spontaneous uterine activity and affect circulation to the uteroplacental unit secondary to volume shifts; thus, aggressive care is needed in these cases.<sup>106</sup>

Scant literature is available on fetal outcome in pregnant women who have been exposed to electrical injury. There are numerous case reports of fetal demise following electrical trauma, with a cumulative fatality rate of around 73%.<sup>107</sup> Complications have included spontaneous abortion, intrauterine growth retardation, oligohydramnios, and sudden cessation of fetal movement. A recent prospective cohort study compared 31 pregnant women exposed to an electric shock (mostly low-voltage) between 4 and 36 weeks' gestation with a matched control group. Of the 31 exposed women, 28 gave birth to healthy infants, 1 had a child with a ventricular septal defect, and 2 had spontaneous abortions. In the control group, 30 healthy babies were born, and there was 1 spontaneous abortion. The authors concluded that most cases of electrical injury do not pose a major risk to the fetus, although it must be noted that patients in their study had a much lower rate of transuterine current than did patients in previous case studies.<sup>108</sup>

### Taser®

With increased use of conducted electrical weapons (ie, Tasers®) by law enforcement agents and by civilians seeking personal protection, emergency clinicians can expect to see more patients in the ED with Taser® injuries. Tasers® use compressed nitrogen to fire 2 metallic darts up to 35 feet and transmit an electrical impulse through up to 2 inches of clothing. The Taser® causes involuntary contractions of the regional skeletal muscles and makes it impossible for the target to move voluntarily. The peak volt-

age across the target's body is approximately 1200 V (delivered in rapid pulses over 5 seconds), and the average current is approximately 2.1 mA.<sup>109</sup> The electric shock delivered by the Taser® is neither pure AC nor pure DC and is probably similar to rapid, low-amplitude DC shocks.<sup>110</sup>

After reports of deaths in police custody following Taser® use, concern has been raised regarding its safety.<sup>111</sup> However, a recent small prospective study by Ho et al<sup>109</sup> found no evidence of Taser®-induced cardiac arrhythmias, ECG changes, or electrolyte abnormalities. Additionally, a prospective series involving 218 patients shot with the original Taser® in the early 1980s described 3 deaths secondary to cardiac arrest; however, all 3 of these patients had high levels of phencyclidine (PCP) in their blood, and this was cited as the cause of death.<sup>112</sup> The authors concluded that the death rate in their series was no higher than that reported for PCP toxicity alone. Although data regarding the effects of the Taser® are limited, it appears most healthy subjects may be safely discharged from the ED after dart removal and evaluation for any other injuries. Although some authors recommend an ECG in patients who have been shot with the Taser®, no current evidence supports this practice.<sup>110</sup>

## Controversies/Cutting Edge

### Cardiac Monitoring After Electrical Injury

Electrical injuries can cause cardiac arrest, cardiac arrhythmias, and even direct myocardial damage. However, it is not always clear which patients need to be admitted to the hospital for cardiac monitoring and for what duration. Traditionally, patients with low-voltage electrical exposure who have a normal ECG on presentation and no history of loss of consciousness or arrhythmia have been discharged home without cardiac monitoring.<sup>19</sup> This practice is supported in the guidelines recommended by Arnoldo et al.<sup>8</sup> (See Table 1, page 2.) Application of the guidelines to the pediatric population is also safe.<sup>24-26,103,113</sup> In fact, Chen and Sareen concluded that some low-risk children do not even require an initial ECG.<sup>103</sup>

The literature on cardiac monitoring in high-voltage electrical injury is especially sparse. Bailey et al<sup>21</sup> recently published a multicenter prospective study involving 134 patients who had at least one of the following risk factors prompting the use of cardiac monitoring: transthoracic current, tetany, loss of consciousness, or a high-voltage injury (> 1000 volts). None of the patients in this study developed late potentially lethal arrhythmias. Most of the patients had transthoracic current and/or tetany as a risk factor, leading the authors to conclude that these patients could be safely discharged from the ED if their initial ECG results were normal. For the few patients with

high-voltage electrical injuries, the authors suggested that cardiac monitoring be continued until adequate evidence supports a recommendation. Most patients with high-voltage electrical trauma have sufficient injuries to require admission anyway.

No published studies have directly evaluated the optimal duration of cardiac monitoring after electrical injury. Currently, this decision is left to the clinician. In several studies, the reported monitoring time was 24 hours after admission if the initial ECG was normal or 24 hours after resolution of any arrhythmias.<sup>25,28,114</sup>

## Disposition

According to the American Burn Association's burn center referral criteria, patients with injuries due to electrical burns, including lightning injury, should

be referred to a burn center.<sup>77</sup> No qualifiers are included with this recommendation, so decisions about which patients truly require transfer are left to the emergency clinician's discretion. Patients with extensive electrical burns will likely require multiple surgeries and extensive occupational and physical rehabilitation and are best served at a burn center. Patients who have abnormal neurologic findings suggestive of spinal cord injury or CNS dysfunction or who have extensive visceral or vascular injury require admission to the intensive care unit or to an area with a similar level of care for frequent monitoring and rapid intervention. Additionally, all patients with a history of loss of consciousness, documented arrhythmias either before or after arrival to the ED (including cardiac arrest), ECG evidence of ischemia, or who have sustained a high-voltage electrical injury should be admitted for additional monitoring.<sup>8</sup>

## Risk Management Pitfalls For Electrical Injuries (Continued on page 13)

1. **"Results from the patient's eye examination were normal when he presented to the ED after a lightning injury last month. I don't know why he's back now weeks later complaining of decreased vision."**

Cataracts is a common sequela of lightning injury and can also be seen after electrical injury. Cataracts may affect one or both eyes. They may be present at the time of injury but often don't develop until weeks to months after the initial insult. All patients presenting after electrical or lightning injury should be warned of this possible complication, and ophthalmology follow-up should be arranged as needed.

2. **"I used the Parkland burn formula to estimate the patient's fluid resuscitation needs. I don't understand why he is still hypotensive and his urine output is poor."**

Electrical injuries are different from purely thermal burns. They are closer to crush injuries because there may be extensive soft tissue and muscular injury that is not obvious from the surface. Because cutaneous burns from electrical injuries do not represent the full extent of injury, formulas for fluid resuscitation based on percentage of body surface area burned are not applicable. Fluid resuscitation should maintain a urine output of 1.0 to 1.5 cc/kg per hour.

3. **"The patient's shoulder appeared normal on examination and an anteroposterior (AP) radiograph looked fine to me. I don't know how I missed a posterior dislocation."**

Shoulder dislocation can occur after electrical injury secondary to tetanic muscle contractions or from falls. Posterior dislocations are difficult to diagnose because the external appearance of the shoulder and an AP radiograph view may be deceptively normal. Key signs to look for on examination are an arm fixed in internal rotation, pain on abduction, and pain on external rotation. An axillary or transscapular view is often needed to make the diagnosis radiographically.

4. **"I saw this patient in the ED 3 months ago with a minor electrical injury to her hand. I don't know why she's back now complaining of diffuse pain, swelling, and coolness of her entire forearm."**

Complex regional pain syndrome (CRPS), formally called reflex sympathetic dystrophy, is a recognized delayed complication of electrical injuries. Patients with CRPS often present months after their initial injury. CRPS is a clinical diagnosis, and symptoms include diffuse pain (often involving a much larger area than the original injury), swelling, decreased range of motion, and temperature or skin color differences. This chronic condition requires long-term care involving multiple specialists.

5. **"This patient who was struck by lightning was slightly confused on arrival to the ED and couldn't remember what had happened to him. I thought this was true of almost all people struck by lightning and was nothing to be too concerned about."**

Patients with low-voltage electrical injury who are asymptomatic or have only mild cutaneous burns, normal ECG results, and no history of loss of consciousness may be safely discharged home. It is important to give these patients clear instructions for follow-up and information about which symptoms should lead them to seek medical treatment. For example, patients with electrical injuries should immediately return to the ED if they develop chest pain, palpitations, lightheadedness, loss of consciousness, signs or symptoms of wound infection (fever, worsening erythema, purulent discharge), or cold, mottled, or painful extremities. They should also be alert for the delayed development of cataracts, neurologic symptoms (weakness, paresthesia, CRPS), and neuropsychological effects (memory and attention problems, depression).

## Summary

Although electrical injuries are uncommon, all emergency physicians will face them at some point. The management of electrical injuries is challenging because patients present with a broad spectrum of complaints and injuries. Patients with electrical injuries can have complex multitrauma and multiorgan issues, and early care is crucial for a good outcome. Emergency clinicians should remember these important points: (1) ECG for all patients and cardiac monitoring when indicated, (2) fluid resuscitation to prevent hypovolemia and renal failure, and (3) frequent neurovascular checks for signs of compartment syndrome in any involved extremities.

## Risk Management Pitfalls For Electrical Injuries (Continued from page 12)

Patients with lightning injuries often sustain loss of consciousness, memory loss, or confusion associated with event. However, these patients are also at high risk for traumatic brain injury secondary to falls or blunt trauma associated with the lightning injury. Any patient whose mental status does not rapidly improve or who has external evidence of head injury should undergo a head CT scan in the ED.

- 6. "I did a neurovascular exam on this patient's arm when he arrived in the ED 4 hours ago. I don't understand why he has compartment pressures of 50 mm Hg now."**  
Compartment syndrome may develop at any time in patients with electrical injuries. It is essential to continue frequent neurovascular checks on these patients and to involve surgical consultants early on.
- 7. "The patient was awake and alert when he came in, talking up a storm. The burns on his face didn't seem to bother him at all. I don't understand how he ended up with a crash airway."**  
Similar to patients with thermal burns, patients with electrical injuries and burns involving the face, mouth, or neck should be evaluated for a difficult airway. These patients may have unseen swelling or injury as a result of their exposure and may rapidly lose their airway. Establishment of an early definitive airway is imperative when this concern exists.
- 8. "When that lightning strike patient came in**

**with pulseless, blue legs I thought he must have thrown a clot. I thought I was doing the right thing when I started him on a heparin infusion. Now he has a head bleed and needs neurosurgical intervention."**

Keraunoparalysis is pathognomonic for lightning injury. It is a form of temporary paralysis where the extremities are numb, blue, cold, and pulseless. It usually resolves on its own within a few hours and does not require any specific treatment.

- 9. "I have read a lot about electrical injuries, and I know how important fluid resuscitation is. I tried fluid resuscitation for my patient with a lightning strike injury, and he ended up with flash pulmonary edema."**  
Lightning injuries are distinct from electrical injuries and should be managed as such. Myoglobinuria is rare after lightning injury, and patients with lightning injuries generally do not require aggressive fluid resuscitation. Management of lightning injuries is largely supportive.
- 10. "I took care of this 3-year-old girl 2 weeks ago when she presented with an oral arc burn. She was healing well. I don't understand why she is back now with severe bleeding."**  
Oral arc burns are very common in children who bite into electric cords. In 5% to 10% of cases, there may be severe bleeding from the labial artery when the eschar separates, which can occur up to 2 weeks after the initial burn. Parents should be preemptively instructed on how to control such bleeding.

## Case Conclusion

The electrician who came in after being found unconscious near a generator remained confused throughout his ED stay. You made sure he had a C-collar in place and ordered head and C-spine CT scans. You also obtained an initial ECG and continued telemetry. After sending off labs, including a CK and myoglobin level, you began IV fluids for a goal urine output of 1.0 to 1.5 cc/kg per hour. A surgical consultant evaluated the patient's upper extremities, and you conducted frequent neurovascular checks. Once the patient was stabilized, you transferred him to the regional burn center. When you followed up on the patient's course, you learned that he underwent fasciotomy of his right upper extremity for compartment syndrome that developed 12 hours after his initial injury.

The young lady shocked by her hair dryer remained relatively asymptomatic, complaining only of mild pain from the superficial burns on her right palm. The results of her initial ECG were normal. You applied a clean, dry dressing to her palm, gave her a tetanus vaccination, and discharged her home with instructions to follow up with her primary doctor in the next few days. You also instructed her to return to the ED if she develops chest pain, palpitations, lightheadedness, or loss of consciousness.

The minute the 3 patients struck by lightning rolled in, you ran to assist the patient in cardiac arrest. You called for additional help and began CPR following ACLS protocols. A definitive airway was placed, but the patient remained pulseless and asystolic. You continued

CPR and held off on treating the other 2 patients until this critical patient was stabilized. You were certain these patients would survive even if they had to wait longer to be evaluated. After several cycles of CPR and epinephrine and atropine, the first patient regained normal sinus rhythm. You cheered silently and then moved on to the secondary survey.

## Note

Full-color versions of the figures in this article are available at no charge to subscribers at [www.ebmedicine.net/topics](http://www.ebmedicine.net/topics).

## References

Evidence-based medicine requires a critical appraisal of the literature based upon study methodology and number of subjects. Not all references are equally robust. The findings of a large, prospective, randomized, and blinded trial should carry more weight than a case report.

To help the reader judge the strength of each reference, pertinent information about the study, such as the type of study and the number of patients in the study, will be included in bold type following the reference, where available. In addition, the most informative references cited in this paper, as determined by the authors, will be noted by an asterisk (\*) next to the number of the reference.

## Cost-Effective Strategies

1. **Admit patients solely for cardiac monitoring only if they have sustained a high-voltage injury or have a history of loss of consciousness, cardiac arrhythmia either before or during their presentation to the ED, or ECG evidence of ischemia.**

*Risk Management Caveat:* Be sure that all patients sent home without cardiac monitoring follow up with their primary doctors and that they have received explicit instructions to seek medical attention if they develop any cardiac symptoms.

2. **Electrical burns, similar to thermal burns, may be complicated by infection. While the tetanus vaccine is often given to patients with electrical injuries, there is no evidence to support the use of prophylactic antibiotics for systemic effect.**

*Risk Management Caveat:* Electrical burn patients should be monitored closely for signs and symptoms of infection such as fever, worsening erythema around the burn site, or purulent

discharge from the wound, and treated with antibiotics as needed.

3. **According to the American Burn Association recommendations, all patients with electrical injuries should be transferred to a burn center.<sup>77</sup> This recommendation does not differentiate between low-voltage and high-voltage injuries or between severity of injuries. Obviously, there will be some electrical trauma victims whose injuries are so minor that they can be adequately treated at the local ED. It is left to the discretion of the emergency clinician to determine which electrical injury patients truly require transfer.**

*Risk Management Caveat:* Patients with high-voltage electrical injuries or evidence of severe or extensive electrothermal burns and patients requiring consultations with specialists should be transferred to a regional burn center as soon as possible.

- \*1. Arnoldo BD, Purdue GF, Kowalske K, Helm PA, Burris A, Hunt JL. Electrical injuries: a 20-year review. *J Burn Care & Rehabil.* 2004;25(6):479-484. **(Retrospective; 700 patients)**
- \*2. Hanumadass ML, Voora SB, Kagan RJ, Matsuda T. Acute electrical burns: a 10-year clinical experience. *Burns Incl Therm Inj.* 1986;12(6):427-431. **(Retrospective; 113 cases)**
3. Price TG, Cooper MA. Electrical and lightning injuries. In: Marx JA, Hockberger RS, Walls RM, eds. *Rosen's Emergency Medicine Concepts and Clinical Practice.* Philadelphia, PA: Mosby-Elsevier; 2006:2267-2278. **(Textbook chapter)**
- \*4. Rai J, Jeschke MG, Barrow RE, Herndon DN. Electrical injuries: a 30-year review. *J Trauma.* 1999;46(5):933-936. **(Retrospective; 185 cases)**
5. Casini V. Overview of electrical hazards. In: *Worker Deaths by Electrocution: A Summary of NIOSH Surveillance and Investigative Findings.* Washington, DC: National Institute for Occupational Safety and Health; 1998:1-51. NIOSH publication 98-131.
6. Fordyce TA, Kelsh M, Lu ET, Sahl JD, Yager JW. Thermal burn and electrical injuries among electric utility workers, 1995-2004. *Burns.* 2007;33(2):209-220. **(Retrospective; 872 injuries)**
7. Kidd M, Hultman CS, Van Aalst J, Calvert C, Peck MD, Cairns BA. The contemporary management of electrical injuries: resuscitation, reconstruction, rehabilitation. *Ann Plast Surg.* 2007;58(3):273-278. **(Institutional review of prospectively gathered database; 115 patients)**
- \*8. Arnoldo B, Klein M, Gibran NS. Practice guidelines for the management of electrical injuries. *J Burn Care Res.* 2006;27(4):439-447. **(Guideline review via MEDLINE literature search)**
9. Spies C, Trohman RG. Narrative review: electrocution and life-threatening electrical injuries. *Ann Intern Med.* 2006;145(7):531-537. **(Review article)**
10. Cooper MA. Emergent care of lightning and electrical injuries. *Semin Neurol.* 1995;15(3):268-278. **(Review article)**
11. Mann CJ. Respiratory compromise: a rare complication of transcatheter electrical nerve stimulation for angina pectoris. *J Accid Emerg Med.* 1996;13(1):68-69. **(Case report)**
12. Haim A, Zucker N, Levitas A, Sofer S, Katz A, Zalstein E. Cardiac manifestations following electrocution in children. *Cardiol Young.* 2008;18(5):458-460. **(Retrospective; 52 patients)**
13. Jensen PJ, Thomsen PE, Bagger JP, Nørgaard A, Baandrup U. Electrical injury causing ventricular arrhythmias. *Br Heart J.* 1987;57(3):279-283. **(Case series; 3 patients)**
14. Sharma BC, Patial RK, Pal LS, Saunkhla J, Thakur SS. Electrocardiographic manifestations following household electric current injury. *J Assoc Physicians India.* 1990;38(12): 938-939. **(Case report; 1 patient)**
15. Biegelmeier C. New knowledge of the impedance of the human body. In Bridges JE, Ford GL, Sherman IA, Vainberg M, eds. *Electric Shock Safety Criteria.* Elmsford, NY: Pergamon Press, 1985.
16. Hettiaratchy S, Dziewulski P. ABC of burns: pathophysiology and types of burns. *BMJ.* 2004;328(7453):1427-1429. **(Review article)**
17. Koumbourlis AC. Electrical injuries. *Crit Care Med.* 2002;30(11 suppl):S424-S430. **(Review article)**
18. Laupland KB, Kortbeek JB, Findlay C, Kirkpatrick AW, Hameed SM. Population-based study of severe trauma due to electrocution in the Calgary Health Region, 1996-2002. *Can J Surg.* 2005;48(4):289-292. **(Retrospective; 10 patients)**
- \*19. Blackwell N, Hayllar J. A three year prospective audit of 212 presentations to the emergency department after electrical injury with a management protocol. *Postgrad Med J.* 2002;78(919):283-285. **(Prospective; 212 patients)**
20. Lown B, Neuman J, Amarasingham R, Berkovits BV. Comparison of alternating current with direct electroshock across the closed chest. *Am J Cardiol.* 1962;10:223-233.
- \*21. Bailey B, Gaudreault P, Thivierge RL. Cardiac monitoring of high-risk patients after an electrical injury: a prospective multicentre study. *Emerg Med J.* 2007;24(5):348-352. **(Prospective; 134 patients and 31 controls)**
22. Akdemir R, Gunduz H, Erbilien E, et al Atrial fibrillation after electrical shock: a case report and review. *Emerg Med J.* 2004;21(6):744-746. **(Case report)**
23. Wander GS, Bansal RK, Anand IS, Arora S, Khurana SB, Chawla LS. Atrial fibrillation following electrical injury. *Jpn Heart J.* 1992;33(1):131-134. **(Case report; 2 patients)**
24. Bailey B, Gaudreault P, Thivierge RL, Turgeon JP. Cardiac monitoring of children with household electrical injuries. *Ann Emerg Med.* 1995;25(5):612-617. **(Retrospective; 164 patients)**
25. Bailey B, Gaudreault P, Thivierge RL. Experience with guidelines for cardiac monitoring after electrical injury in children. *Am J Emerg Med.* 2000;18:671-675. **(Retrospective; 224 patients)**
26. Garcia CT, Smith GA, Cohen DM, Fernandez K. Electrical injuries in a pediatric emergency department. *Ann Emerg Med.* 1995;26(5):604-608. **(Retrospective; 78 patients)**
27. Purdue GF, Hunt JL. Electrocardiographic monitoring after electrical injury: necessity or luxury? *J Trauma.* 1986;26(2):166-167. **(Retrospective; 48 patients)**
28. Zubair M, Besner GE. Pediatric electrical burns: management strategies. *Burns.* 1997;23(5):413-420. **(Retrospective; 127 patients)**
29. Arrowsmith J, Usgaocar RP, Dickson WA. Electrical injury and frequency of cardiac complications. *Burns.* 1997;23(7-8):576-578. **(Retrospective; 145 patients)**
30. Hunt JL, Sato RM, Baxter CR. Acute electric burns: current diagnostic and therapeutic approaches to management. *Arch Surg.* 1980;115(4):434-438. **(Retrospective; 102 patients)**
31. Homma S, Gillam LD, Weyman AE. Echocardiographic observations in survivors of acute electrical injury. *Chest.* 1990;97(1):103-105. **(Case series)**
32. Kinney TJ. Myocardial infarction following electrical injury. *Ann Emerg Med.* 1982;11(11):622-625. **(Case report; 1 patient)**
33. Walton AS, Harper RW, Coggins GL. Myocardial infarction after electrocution. *Med J Aust.* 1988;148(7):365-367. **(Case report; 1 patient)**
34. Jost WH, Schönrock LM, Cherington M. Autonomic nervous system dysfunction in lightning and electrical injuries. *NeuroRehabilitation.* 2005;20(1):19-23. **(Review article)**
35. Herlevsen P, Andersen PT. Constitutional predisposition to vasovagal syncope: an additional risk factor in patients exposed to electrical injuries? *Br Heart J.* 1987;57(3):284-285. **(Case report)**
36. Bongard O, Fagrell B. Delayed arterial thrombosis following an apparently trivial low-voltage electrical injury. *Vasa.* 1989;18(2):162-166.
37. Hunt JL, McManus WF, Haney WP, Pruitt BA Jr. Vascular lesions in acute electrical injuries. *J Trauma.* 1974;14(6):461-473.
38. Grube B, Heimbach D, Engrav LH, Copass MK. Neurologic consequences of electrical burns. *J Trauma.* 1990;30(3):254-258. **(Retrospective; 90 patients)**
39. Fan KW, Zhu ZX, Den ZY. An experimental model of an electrical injury to the peripheral nerve. *Burns.* 2005;31(6):731-736. **(Prospective; 30 rats)**
40. Jafari H, Couratier P, Camu W. Motor neuron disease after electric injury. *J Neurol Neurosurg Psychiatry.* 2001;71(2):265-267. **(Case series; 6 patients)**
41. Varghese G, Mani MM, Redford JB. Spinal cord injuries

- following electrical accidents. *Paraplegia*. 1986;24(3):159-166. **(Retrospective; 116 patients)**
42. Ko SH, Chun W, Kim HC. Delayed spinal cord injury following electrical burns: a 7-year experience. *Burns*. 2004;30(7):691-695. **(Case series; 13 cases)**
  43. Abhinav K, Al-Chalabi A, Hortobagyi T, Leigh PN. Electrical injury and amyotrophic lateral sclerosis: a systematic review of the literature. *J Neurol Neurosurg Psychiatry*. 2007;78(5):450-453. **(Systematic review of literature)**
  44. Saffle JR, Crandall A, Warden GD. Cataracts: a long-term complication of electrical injury. *J Trauma*. 1985;25(1):17-21. **(Retrospective; 113 patients)**
  45. Boozalis GT, Purdue GF, Hunt JL, McCulley JP. Ocular changes from electrical burn injuries: a literature review and report of cases. *J Burn Care Rehabil*. 1991;12(5):458-462. **(Retrospective; 159 patients)**
  46. Jindal P, Nagarkar AN, Mann SB. Reversible hearing loss associated with high-voltage electric shock. *J Laryngol Otol*. 2005;119(8):631-633. **(Case report)**
  47. Fish RM. Electric injury, part II: specific injuries. *J Emerg Med*. 2000;18(1):27-34. **(Review article)**
  48. Janus TJ, Barrash J. Neurologic and neurobehavioral effects of electric and lightning injuries. *J Burn Care Rehabil*. 1996;17(5):409-415. **(Retrospective; 14 patients)**
  49. Hendler N. Overlooked diagnoses in chronic pain: analysis of survivors of electric shock and lightning strike. *J Occup Environ Med*. 2005;47(8):796-805. **(Retrospective, 72 patients)**
  50. George EN, Schur K, Muller M, Mills S, Brown TL. Management of high voltage electrical injury in children. *Burns*. 2005;31(4):439-444. **(Case series; 3 patients)**
  51. 2005 American Heart Association Guidelines for Cardiopulmonary Resuscitation and Emergency Cardiovascular Care. Part 10.9: Electric shock and lightning strikes. *Circulation*. 2005;112(24 suppl):IV-154-IV-155. **(AHA guidelines)**
  52. Doig CJ, Boiteau PJ, Sandham JD. A 2-year prospective cohort study of cardiac resuscitation in a major Canadian hospital. *Clin Invest Med*. 2000;23(2):132-143. **(Prospective; 334 patients)**
  53. Brindley PG, Markland DM, Mayers I, Kutsogiannis DJ. Predictors of survival following in-hospital adult cardiopulmonary resuscitation. *CMAJ*. 2002;167(4):343-348. **(Retrospective; 247 patients)**
  54. Fontanarosa PB. Electrical shock and lightning strike. *Ann Emerg Med*. 1993;22(2, pt 2):378-387. **(Review article)**
  55. Cherington M, Kurtzman R, Krider EP, Yarnell PR. Mountain medical mystery: unwitnessed death of a healthy young man, caused by lightning. *Am J Forensic Med Pathol*. 2001;22(3):296-298. **(Case report)**
  56. Ahrenholz DH, Schubert W, Solem LD. Creatine kinase as a prognostic indicator in electrical injury. *Surgery*. 1998;104(4):741-747. **(Retrospective; 125 patients)**
  57. Kopp J, Loos B, Spilker G, Horch RE. Correlation between serum creatine kinase levels and extent of muscle damage in electrical burns. *Burns*. 2004;30(7):680-683. **(Retrospective; 42 patients)**
  58. Guinard JP, Chioloro R, Buchser E, et al Myocardial injury after electrical burns: short and long term study. *Scand J Plast Reconstr Surg Hand Surg*. 1987;21(3):301-302. **(Prospective; 10 patients)**
  59. Housinger TA, Green L, Shahangian S, Saffle JR, Warden GD. A prospective study of myocardial damage in electrical injuries. *J Trauma*. 1985;25(2):122-124. **(Prospective; 16 patients)**
  60. McBride JW, Labrosse KR, McCoy HG, Ahrenholz DH, Solem LD, Goldenberg IF. Is serum creatine kinase-MB in electrically injured patients predictive of myocardial injury? *JAMA*. 1986;255(6):764-768. **(Retrospective; 36 patients)**
  61. Tompkins GS, Henderson RC, Peterson HD. Bilateral simultaneous fractures of the femoral neck: case report. *J Trauma*. 1990;30(11):1415-1416. **(Case report)**
  62. Fleckenstein JL, Chason DP, Bonte FJ, et al High-voltage electric injury: assessment of muscle viability with MR imaging and Tc-99m pyrophosphate scintigraphy. *Radiology*. 1995;195(1):205-210. **(Prospective; 12 patients)**
  63. Hammond J, Ward CG. The use of technetium-99 pyrophosphate scanning in management of high voltage electrical injuries. *Am Surg*. 1994;60(11):886-888. **(Prospective; 15 patients)**
  64. Ohashi M, Koizumi J, Hosoda Y, Fujishiro Y, Tuyuki A, Kikuchi K. Correlation between magnetic resonance imaging and histopathology of an amputated forearm after an electrical injury. *Burns*. 1998;24(4):362-368. **(Case report)**
  65. DiVincenti FC, Moncrief JA, Pruitt BA Jr. Electrical injuries: a review of 65 cases. *J Trauma*. 1969;9(6):497-507. **(Retrospective; 65 cases)**
  66. Achauer B, Applebaum R, Vander Kam VM. Electrical burn injury to the upper extremity. *Br J Plast Surg*. 1994;47(5):331-340. **(Retrospective; 22 patients)**
  67. Butler E, Gant TD. Electrical injuries, with special reference to the upper extremities: a review of 182 cases. *Am J Surg*. 1977;134(1):95-101. **(Retrospective; 182 patients)**
  68. d'Amato TA, Kaplan IB, Britt LD. High-voltage electrical injury: a role for mandatory exploration of deep muscle compartments. *J Natl Med Assoc*. 1994;86(7):535-537. **(Case series; 6 patients)**
  69. Hussmann J, Kucan JO, Russell RC, Bradley T, Zamboni WA. Electrical injuries—morbidity, outcome, and treatment rationale. *Burns*. 1995;21(7):530-535. **(Retrospective; 38 injuries)**
  70. Luce E, Gottlieb SE. "True" high-tension electrical injuries. *Ann Plast Surg*. 1984;12(4):321-326. **(Retrospective; 31 patients)**
  71. Mann RJ, Wallquist JM. Early decompression fasciotomy in the treatment of high-voltage electrical burns of the extremities. *South Med J*. 1975;68(9):1103-1108. **(Case series; 8 patients)**
  72. Mann R, Gibran N, Engrav L, Heimbach D. Is immediate decompression of high voltage electrical injuries to the upper extremity always necessary? *J Trauma*. 1996;40(4):584-589. **(Retrospective; 26 patients)**
  73. Parshley PF, Kilgore J, Pulito JF, Smiley PW, Miller SH. Aggressive approach to the extremity damaged by electric current. *Am J Surg*. 1985;150(1):78-82. **(Retrospective; 41 patients)**
  74. Quinby WC, Burke JF, Trelstad RL, Caulfield J. The use of microscopy as a guide to primary excision of high-tension electrical burns. *J Trauma*. 1978;18(6):423-431. **(Retrospective; 44 patients)**
  75. Dossett AB, Hunt JL, Purdue GF, Schlegel JD. Early orthopedic intervention in burn patients with major fractures. *J Trauma*. 1991;31(7):888-892. **(Retrospective; 101 patients)**
  76. Gupta KL, Kumar R, Sekhar MS, Sakhuja V, Chugh KS. Myoglobinuric acute renal failure following electrical injury. *Ren Fail*. 1991;13(1):23-25. **(Retrospective; 8 patients)**
  77. Gómez R, Cancio LC. Management of burn wounds in the emergency department. *Emerg Med Clin North Am*. 2007;25(1):135-146. **(Review)**
  78. Pham TN, Gibran NS. Thermal and electrical injuries. *Surg Clin North Am*. 2007;87(1):185-206, vii-viii. **(Review article)**
  79. Haberal M, Ucar N, Bayraktar U, Oner Z, Bilgin N. Visceral injuries, wound infection, and sepsis following electrical injuries. *Burns*. 1996;22(2):158-161. **(Retrospective; 226 patients)**
  80. Willams DB, Karl RC. Intestinal injury associated with low-



- voltage electrocution. *J Trauma*. 1981;21(3):246-250. (Case report)
81. Chen PS, Aliapoulous MA. Acute acalculous cholecystitis: ultrasonic appearance. *Arch Surg*. 1978;113(12):1461-1462. (Case report)
  82. Taylor PH, Pugsley IQ, Vogel EH Jr. The intriguing electrical burn: a review of thirty-one electrical burn cases. *J Trauma*. 1962;2:309-326. (Case report)
  83. Newsome TW, Curreri PW, Eurenus K. Visceral injuries: an unusual complication of an electrical burn. *Arch Surg*. 1972;105(3):494-497. (Case report)
  84. Sandhir RK, Tiwari IN, Goel A. Management of electrical injuries of the abdomen. *Burns*. 1992;18(3):253-255. (Case series; 3 patients)
  85. Curran EB, Holle RL, López RE. Lightning fatalities, injuries, and damage reports in the United States from 1959-1994. NOAA tech memorandum NWS SR-193. <http://www.nssl.noaa.gov/papers/techmemos/NWS-SR-193/techmemo-sr193.html>. Published October 1997. Accessed December 10, 2008.
  86. Cherington M, Breed DW, Yarnell PR, Smith WE. Lightning injuries during snowy conditions. *Br J Sports Med*. 1998;32(4):333-335. (Case report)
  87. O'Keefe Gatewood M, Zane RD. Lightning injuries. *Emerg Med Clin North Am*. 2004;22(2):369-403. (Review article)
  88. Carte AE, Anderson RB, Cooper MA. A large group of children struck by lightning. *Ann Emerg Med*. 2002;39(6):665-670. (Case series; 28 patients)
  89. Espaillat A, Janigian R Jr, To K. Cataracts, bilateral macular holes, and rhegmatogenous retinal detachment induced by lightning. *Am J Ophthalmol*. 1999;127(2):216-217. (Case report)
  90. Gupta A, Kaliaperumal S, Sengupta S, Babu R. Bilateral cataract following lightning injury. *Eur J Ophthalmol*. 2006;16(4):624-626. (Case report)
  91. Fahmy FS, Brinsden MD, Smith J, Frame JD. Lightning: the multisystem group injuries. *J Trauma*. 1999;46(5):937-940. (Case series; 17 patients)
  92. Cherington, M. Neurologic manifestations of lightning strikes. *Neurology*. 2003;60(2):182-185. (Review article)
  93. Lammertse DP. Neurorehabilitation of spinal cord injuries following lightning and electrical trauma. *NeuroRehabilitation*. 2005;20(1):9-14. (Review article)
  94. Aslar AK, Soran A, Yildiz Y, Isik Y. Epidemiology, morbidity, mortality, and treatment of lightning injuries in a Turkish burns unit. *Int J Clin Pract*. 2001;55(8):502-504. (Retrospective review; 22 patients)
  95. ten Duis HJ, Klasen HJ, Reenalda PE. Keraunoparalysis, a "specific" lightning injury. *Burns Incl Therm Inj*. 1985;12(1):54-57. (Case report; 2 patients)
  96. Mann H, Kozić Z, Boulos MI. CT of lightning injury. *AJNR Am J Neuroradiol*. 1983;4(4):976-977. (Case report)
  97. Ozgun B, Castillo M. Basal ganglia hemorrhage related to lightning strike. *AJNR Am J Neuroradiol*. 1995;16(6):1370-1371. (Case report)
  98. Stanley LD, Suss RA. Intracerebral hematoma secondary to lightning stroke: case report and review of the literature. *Neurosurgery*. 1985;16(5):686-688. (Case report)
  99. Wakasugi C, Masui M. Secondary brain hemorrhages associated with lightning stroke: report of a case. *Nihon Hoigaku Zasshi*. 1986;40(1):42-46. (Case report)
  100. Aslan S, Yilmaz S, Karcioğlu O. Lightning: an unusual cause of cerebellar infarction. *Emerg Med J*. 2004;21(6):750-751. (Case report)
  101. Cherington M, Yarnell P, Lammereste D. Lightning strikes: nature of neurological damage in patients evaluated in hospital emergency departments. *Ann Emerg Med*. 1999;21(5):575-578. (Case series; 6 patients)
  102. van Zomeren AH, ten Duis HJ, Minderhoud JM, Sipma M. Lightning stroke and neuropsychological impairment: cases and questions. *J Neurol Neurosurg Psychiatry*. 1998;64(6):763-769. (Case series; 6 patients)
  - \*103. Chen EH, Sareen A. Do children require ECG evaluation and inpatient telemetry after household electrical exposures? *Ann Emerg Med*. 2007;49(1):64-67. (Guideline review via MEDLINE literature search)
  104. Banks K, Merlino PG. Minor oral injuries in children. *Mt Sinai J Med*. 1998;65(5-6):333-342. (Review article)
  105. Fish RM. Electric injury, part III: cardiac monitoring indications, the pregnant patient, and lightning. *J Emerg Med*. 2000;18(2):181-187. (Review article)
  106. García Gutiérrez JJ, Meléndez J, Terrero JV, Obregón O, Uceda M, Gabilondo FJ. Lightning injuries in a pregnant woman: a case report and review of the literature. *Burns*. 2005;31(8):1045-1049. (Case report)
  107. Fatovich DM. Electric shock in pregnancy. *J Emerg Med*. 1993;11(2):175-177. (MEDLINE literature review)
  108. Einaron A, Bailey B, Inocencio G, Ormond K, Koren G. Accidental electric shock in pregnancy: a prospective cohort study. *Am J Obstet Gynecol*. 1997;176(3):678-681. (Prospective; 31 patients)
  109. Ho JD, Miner JR, Lakireddy DR, Bultman LL, Heegaard WG. Cardiovascular and physiologic effects of conducted electrical weapon discharge in resting adults. *Acad Emerg Med*. 2006;13(6):589-595. (Prospective; 66 patients)
  110. Bleetman A, Steyn R, Lee C. Introduction of the Taser® into British policing: implications for UK emergency departments: an overview of electronic weaponry. *Emerg Med J*. 2004;21(2):136-140. (Review article)
  111. Amnesty International. United States of America: Excessive and lethal force? Amnesty International's concerns about deaths and ill-treatment involving police use of Tasers®. Amnesty International Library Web site. <http://web.amnesty.org/library/index/engamr511392004>. Published November 30, 2004. Accessed February 8, 2008.
  112. Ordog GJ, Wasserberger J, Schlater T, Balasubramaniam S. Electronic gun (Taser) injuries. *Ann Emerg Med*. 1987;16(1):73-78. (Prospective; 218 patients)
  113. Wilson CM, Fatovich DM. Do children need to be monitored after electric shocks? *J Paediatr Child Health*. 1998;34(5):474-476. (Retrospective; 44 patients)
  114. Wallace BH, Cone JB, Vanderpool RD, Bond PJ, Russell JB, Caldwell FT Jr. Retrospective evaluation of admission criteria for paediatric electrical injuries. *Burns*. 1995;21(8):590-593. (Retrospective; 35 patients)

## CME Questions



Take This Test Online!

Physician subscribers receive CME credit absolutely free by completing the following test. Monthly online testing is now available for current and archived issues. Visit <http://www.ebmedicine.net/CME> today to receive your free CME credits. Each issue includes 4 AMA PRA Category 1 Credits™ or 4 ACEP Category 1, AAFP Prescribed, or AOA Category 2B credits.

1. **Which tissue has the highest resistance?**
  - a. Skin
  - b. Nerve
  - c. Bone
  - d. Muscle
2. **Which statement regarding high-voltage injuries is NOT true?**
  - a. High-voltage injuries involve more than 1000 volts.
  - b. High-voltage injuries rarely cause deep burns.
  - c. High-voltage injuries require transfer to a regional burn center.
  - d. High-voltage injuries require admission for cardiac monitoring.
3. **Which is a rare consequence of electrical injury?**
  - a. Acute myocardial infarction
  - b. Cardiac arrest
  - c. Compartment syndrome
  - d. Spinal cord injury
4. **What is the main treatment for myoglobinuria?**
  - a. Sodium bicarbonate to alkalinize the urine
  - b. Furosemide to improve diuresis
  - c. Mannitol to increase urine output
  - d. IV fluid to maintain urine output of 1.0 to 1.5 cc/kg per hour
5. **Which is more commonly associated with electrical injury than with lightning injury?**
  - a. Cardiac arrest
  - b. Neurologic symptoms
  - c. Cataracts
  - d. Significant burns or soft tissue injury
6. **Which patient may be safely discharged home from the ED?**
  - a. A young man who sustained a high-voltage injury and has deep burns to his upper extremities.
  - b. A middle-aged female presenting after a low-voltage injury who is asymptomatic and has a normal ECG.
  - c. A young woman presenting after a low-voltage injury who had a transient arrhythmia on arrival to the ED.
  - d. A middle-aged man who sustained a low-voltage injury and who is asymptomatic but has new ST segment changes on ECG.
7. **Which is NOT an indication for surgical decompression of an upper extremity electrical injury?**
  - a. Progressive neurologic dysfunction
  - b. Increased compartment pressure
  - c. Joint dislocation
  - d. Vascular compromise
8. **Which statement regarding conducted electrical weapons (ie, Tasers®) is true?**
  - a. They are known to cause cardiac arrhythmias.
  - b. They cause involuntary contractions of regional skeletal muscles leading to immobilization of the victim.
  - c. They utilize only DC currents.
  - d. Patients with a Taser® injury should always be admitted for cardiac telemetry.
9. **Which statement describes why AC is considered more dangerous than DC?**
  - a. AC causes tetanic muscle contractions that prolong contact with the electrical source.
  - b. AC has a higher voltage.
  - c. AC causes more traumatic injuries secondary to falls.
  - d. AC is more likely to result in associated thermal burns.
10. **What is the top priority in providing prehospital care to patients with electrical injuries?**
  - a. Initiating CPR as quickly as possible in patients with cardiac arrest.
  - b. Transporting patients as rapidly as possible to a regional burn center.
  - c. Placing C-collars on patients to stabilize any possible cervical spine injuries.
  - d. Ensuring that the electrical source has been turned off and that it is safe for rescuers to approach the victim.
11. **Which diagnostic tool has NOT been shown to be helpful in managing adult patients with electrical injuries?**
  - a. ECG
  - b. Basic laboratory tests including complete blood cell count, electrolytes, serum urea nitrogen/creatinine, and urinalysis.
  - c. Troponin
  - d. Creatine kinase
12. **Which is NOT a standard treatment for cutaneous electrothermal injuries?**
  - a. Clean dry dressings placed in the field
  - b. Prophylactic systemic antibiotics to protect against clostridial myositis
  - c. Antibiotic dressings such as mafenide acetate or sulfadiazine silver
  - d. Tetanus vaccination

ANNOUNCING:

## EM Practice Guidelines Update

EB Medicine is pleased to announce *EM Practice Guidelines Update*, an exciting new publication we're providing absolutely free to all *Emergency Medicine Practice* subscribers.

To download your free copy of this new online resource, visit [www.ebmedicine.net/guidelines](http://www.ebmedicine.net/guidelines)

*EM Practice Guidelines Update* was developed based on feedback from you and thousands of your colleagues. It is designed to meet the needs of emergency clinicians by providing summaries of Clinical Policies and Practice Guidelines along with editorial commentary, so you get only the most-know information in just a few short pages — without having to sift through dozens of pages of text, performing lengthy searches online, or trying to collect all the guidelines relevant to your practice from many different sources.

Our Editorial Board developed *EM Practice Guidelines Update* with you in mind, so we welcome your feedback. Please email [JagodaMD@ebmedicine.net](mailto:JagodaMD@ebmedicine.net) with your comments and suggestions.

### May 2009 Errata

In the May 2009 issue of *Emergency Medicine Practice*, "Complications in Pregnancy Part II: Hypertensive Disorders of Pregnancy and Vaginal Bleeding," there are two errors.

1. On page 9 (right column, first paragraph), the sentence incorrectly reads: "A contained acute hemorrhage will appear **hyperechoic**..." The corrected sentence reads: "A contained acute hemorrhage will appear **hypoechoic**..."
2. In Table 9, the side effects for nitroprusside and nitroglycerine are reversed. The side effect of nitroprusside is "cyanide production." The side effects for nitroglycerine are "headache, tachycardia, methemoglobinemia, increased intracranial pressure."

We regret the errors and apologize for any confusion.

### Physician CME Information

**Date of Original Release:** September 1, 2009. Date of most recent review: May 6, 2009. Termination date: September 1, 2012.

**Accreditation:** This activity has been planned and implemented in accordance with the Essentials and Standards of the Accreditation Council for Continuing Medical Education (ACCME) through the sponsorship of EB Medicine. EB Medicine is accredited by the ACCME to provide continuing medical education for physicians.

**Credit Designation:** EB Medicine designates this educational activity for a maximum of 48 AMA PRA Category 1 Credits™ per year. Physicians should only claim credit commensurate with the extent of their participation in the activity.

**ACEP Accreditation:** *Emergency Medicine Practice* is approved by the American College of Emergency Physicians for 48 hours of ACEP Category 1 credit per annual subscription.

**AAFP Accreditation:** *Emergency Medicine Practice* has been reviewed and is acceptable for up to 48 Prescribed credits per year by the American Academy of Family Physicians. AAFP Accreditation begins August 1, 2009. Term of approval is for one year from this date. Each issue is approved for 4 Prescribed credits. Credits may be claimed for one year from the date of this issue.

**AOA Accreditation:** *Emergency Medicine Practice* has been approved for 48 Category 2B credit hours per year by the American Osteopathic Association.

**Needs Assessment:** The need for this educational activity was determined by a survey of medical staff, including the editorial board of this publication; review of morbidity and mortality data from the CDC, AHA, NCHS, and ACEP; and evaluation of prior activities for emergency physicians.

**Target Audience:** This enduring material is designed for emergency medicine physicians, physician assistants, nurse practitioners, and residents.

**Goals & Objectives:** Upon completion of this article, you should be able to: (1) demonstrate medical decision-making based on the strongest clinical evidence; (2) cost-effectively diagnose and treat the most critical ED presentations; and (3) describe the most common medicolegal pitfalls for each topic covered.

**Discussion of Investigational Information:** As part of the newsletter, faculty may be presenting investigational information about pharmaceutical products that is outside Food and Drug Administration-approved labeling. Information presented as part of this activity is intended solely as continuing medical education and is not intended to promote off-label use of any pharmaceutical product. **Disclosure of Off-Label Usage:** This issue of *Emergency Medicine Practice* discusses no off-label use of any pharmaceutical product.

**Faculty Disclosure:** It is the policy of EB Medicine to ensure objectivity, balance, independence, transparency, and scientific rigor in all CME-sponsored educational activities. All faculty participating in the planning or implementation of a sponsored activity are expected to disclose to the audience any relevant financial relationships and to assist in resolving any conflict of interest that may arise from the relationship. Presenters must also make a meaningful disclosure to the audience of their discussions of unlabeled or unapproved drugs or devices.

In compliance with all ACCME Essentials, Standards, and Guidelines, all faculty for this CME activity were asked to complete a full disclosure statement. The information received is as follows: **Dr. Czuczman, Dr. Zane, Dr. Cooper, Dr. Daley, and their related parties report no significant financial interest or other relationship with the manufacturer(s) of any commercial product(s) discussed in this educational presentation.**

#### Method of Participation:

- **Print Semester Program:** Paid subscribers who read all CME articles during each *Emergency Medicine Practice* six-month testing period, complete the post-test and the CME Evaluation Form distributed with the June and December issues, and return it according to the published instructions are eligible for up to 4 hours of CME credit for each issue. You must complete both the post test and CME Evaluation Form to receive credit. Results will be kept confidential. CME certificates will be delivered to each participant scoring higher than 70%.
- **Online Single-Issue Program:** Current, paid subscribers who read this *Emergency Medicine Practice* CME article and complete the online post-test and CME Evaluation Form at [ebmedicine.net](http://ebmedicine.net) are eligible for up to 4 hours of Category 1 credit toward the AMA Physician's Recognition Award (PRA). You must complete both the post-test and CME Evaluation Form to receive credit. Results will be kept confidential. CME certificates may be printed directly from the website to each participant scoring higher than 70%.

**Hardware/Software Requirements:** You will need a Macintosh or PC to access the online archived articles and CME testing. Adobe Reader is required to view the PDFs of the archived articles. Adobe Reader is available as a free download at [www.adobe.com](http://www.adobe.com).

CEO: Robert Williford **President and Publisher:** Stephanie Ivy **Associate Editor and CME Director:** Jennifer Pai  
**Associate Editor:** Dorothy Whisenhunt **Director of Member Services:** Liz Alvarez

Direct all questions to:

#### EB Medicine

1-800-249-5770 or 1-678-366-7933

Fax: 1-770-500-1316

5550 Triangle Parkway, Suite 150

Norcross, GA 30092

E-mail: [ebm@ebmedicine.net](mailto:ebm@ebmedicine.net)

Website: [www.ebmedicine.net](http://www.ebmedicine.net)

To write a letter to the editor, please email: [jagodamd@ebmedicine.net](mailto:jagodamd@ebmedicine.net)

#### Subscription Information:

48 AMA PRA Category 1 Credits™,

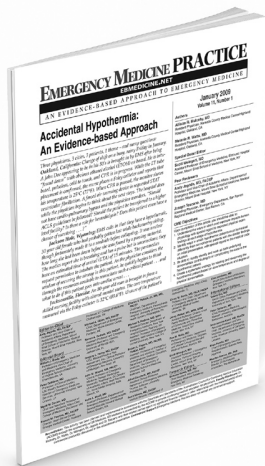
48 ACEP Category 1, AAFP Prescribed, or AOA Category 2B  
CME credits, and full online access to searchable archives

and additional CME: \$329

Individual issues, including 4 CME credits: \$30

(Call 1-800-249-5770 or go to [www.empractice.com](http://www.empractice.com) to order)

*Emergency Medicine Practice* (ISSN Print: 1524-1971, ISSN Online: 1559-3908) is published monthly (12 times per year) by EB Practice, LLC (5550 Triangle Parkway, Suite 150, Norcross, GA 30092). Opinions expressed are not necessarily those of this publication. Mention of products or services does not constitute endorsement. This publication is intended as a general guide and is intended to supplement, rather than substitute, professional judgment. It covers a highly technical and complex subject and should not be used for making specific medical decisions. The materials contained herein are not intended to establish policy, procedure, or standard of care. *Emergency Medicine Practice* is a trademark of EB Practice, LLC. Copyright © 2009 EB Practice, LLC. All rights reserved. No part of this publication may be reproduced in any format without written consent of EB Practice, LLC. This publication is intended for the use of the individual subscriber only and may not be copied in whole or part or redistributed in any way without the publisher's prior written permission — including reproduction for educational purposes or for internal distribution within a hospital, library, group practice, or other entity.



**Group subscriptions  
are available  
offering substantial  
discounts off the  
regular price.**

**Please contact Robert Williford, Director of Group Sales, at 678-366-7933 or [rw@ebmedicine.net](mailto:rw@ebmedicine.net) for more information.**

**Coming In Future Issues**

- Influenza
- Facial Anesthesia
- Traumatic Ocular Emergencies

**Are you prepared for the  
ABEM LLSA Exam?**

EB Medicine's LLSA Study Guide is the definitive resource to prepare for the annual ABEM LLSA exam. With it, you receive full article reprints, summaries and discussions of each article, sample questions with answers and explanations, and 35 AMA/ACEP Category 1 CME credits. Order yours today by calling 1-800-249-5770 or visiting [www.empractice.com](http://www.empractice.com).

**Emergency Medicine Practice subscribers:**

Your subscription includes FREE CME: 48 AMA PRA Category 1 Credits™, 48 ACEP Category 1, AAFP Prescribed, or AOA Category 2B credits per year from current issues, plus an additional 144 credits online. To receive your free credits, simply mail or fax the 6-month print answer form to EB Medicine or log in to your free online account at [www.ebmedicine.net](http://www.ebmedicine.net). Call 1-800-249-5770 if you have any questions or comments.

**Binders**

Emergency Medicine Practice has sturdy binders that are great for storing all your issues. To order your binder for just \$15, please email [ebm@ebmedicine.net](mailto:ebm@ebmedicine.net), call 1-800-249-5770, or go to [www.empractice.com](http://www.empractice.com), scroll down, and click "Binders" on the left side of the page. If you have any questions or comments, please call or email us. Thank you!

**Do you like what you're reading?**

Then pass along this issue so a colleague can become a subscriber too – at this special introductory rate: Just \$279 for a full year (12 issues) of *Emergency Medicine Practice*. Plus, you receive 3 free issues for each colleague you refer.

- Check enclosed (payable to EB Medicine)
- Charge my:
  - Visa  MC  AmEx: \_\_\_\_\_ Exp: \_\_\_\_\_
- Signature: \_\_\_\_\_
- Bill me

Name of new subscriber: \_\_\_\_\_  
 Address: \_\_\_\_\_  
 Address: \_\_\_\_\_  
 City, State, Zip: \_\_\_\_\_  
 Email: \_\_\_\_\_  
 Colleague's name who referred you: \_\_\_\_\_

Promotion Code: **ISSUE**

Send to: EB Medicine / 5550 Triangle Pkwy, Ste 150 / Norcross, GA 30092. Or fax to: 770-500-1316. Or visit: [www.ebmedicine.net](http://www.ebmedicine.net) and enter Promo Code ISSUE. Or call: 1-800-249-5770 or 678-366-7933.

# EMERGENCY MEDICINE PRACTICE

EBMEDICINE.NET

AN EVIDENCE-BASED APPROACH TO EMERGENCY MEDICINE

## EVIDENCE-BASED PRACTICE RECOMMENDATIONS

### Electrical Injuries: A Review For The Emergency Clinician

Czuczman AD, Zane RD. October 2009; Volume 11, Number 10

*This issue of Emergency Medicine Practice focuses on the challenges of evaluating and managing electrical injuries, using the best available evidence from the literature. For a more detailed discussion of this topic, including figures and tables, clinical pathways, and other considerations not noted here, please see the complete issue at [www.ebmedicine.net/topics](http://www.ebmedicine.net/topics).*

Key Points	Comments
Survey the scene carefully and make sure the electrical source has been shut off before approaching any victims of electrical injury.	Although no published reports describe this, the underlying theory presumes that if the victim is still in contact with the electrical source, he or she (or even the ground if it is wet) can become a conductor and electrocute the rescuer.
Always start with the ABCs, and follow basic Advanced Cardiac Life Support and Advanced Trauma Life Support algorithms.	Take note of any electrothermal burns involving the face, mouth, or neck, as they may make obtaining a secure airway more difficult. Also look for tympanic membrane rupture during the otoscopic examination, as this may be the only clue of lightning injury in a patient brought from the field. <sup>55</sup>
Obtain an initial ECG for all adult patients. <sup>8</sup>	An ECG should be obtained for both low-voltage and high-voltage injuries.
Use cardiac monitoring for patients with arrhythmia or evidence of ischemia on electrocardiogram, loss of consciousness, and high-voltage (> 1000 volts) injuries. <sup>8,19,21,103</sup>	This recommendation is based on the practice guidelines developed by Arnoldo et al and published in the Journal of Burn Care and Research in 2006 using Class II and Class III evidence. <sup>8</sup>
Watch out for rhabdomyolysis in electrical injury patients, especially those with a high-voltage injury.	If heme pigment from rhabdomyolysis is present in the urine, urine output must be constantly monitored.
Do not use any formula for IV fluid resuscitation that is based on percentage of body surface area burned. These formulas are not applicable in electrical injuries because there may be significant underlying musculoskeletal injury.	Fluid resuscitation should maintain a urine output of 1.0 to 1.5 cc/kg per hour. <sup>76</sup>
Involve consultants early on and consider transfer to a regional burn center for any patients with significant electrothermal burns. <sup>77</sup>	Patients with extensive electrical burns will likely require multiple surgeries and occupational and physical rehabilitation and are best served at a burn center. Patients who have abnormal neurologic findings suggestive of spinal cord injury, CNS dysfunction, or extensive visceral or vascular injury require admission to ICU or an area with a similar level of care for frequent monitoring and rapid intervention. All patients with a history of loss of consciousness, documented arrhythmias (including cardiac arrest) before or after arrival to the ED, ECG evidence of ischemia, or who have a sustained a high-voltage electrical injury should be admitted for additional monitoring. <sup>8</sup>
Immediately remove any constricting objects such as rings because edema may develop quickly.	Vascular injuries can also lead to edema and/or compartment syndrome. Vascular injury following electrical trauma is usually most severe in the small muscle branches where the blood flow is slower; this can create tissue necrosis. <sup>37</sup>

See reverse side for reference citations.

5550 Triangle Parkway, Suite 150 • Norcross, GA 30092 • 1-800-249-5770 or 678-366-7933

Fax: 1-770-500-1316 • [ebm@ebmedicine.net](mailto:ebm@ebmedicine.net) • [www.ebmedicine.net](http://www.ebmedicine.net)

## REFERENCES

*These references are excerpted from the original manuscript. For additional references and information on this topic, see the full text article at [ebmedicine.net](http://ebmedicine.net).*

8. Arnoldo B, Klein M, Gibran NS. Practice guidelines for the management of electrical injuries. *J Burn Care Res.* 2006;27(4):439-447. **(Guideline review via MEDLINE literature search)**
19. Blackwell N, Hayllar J. A three year prospective audit of 212 presentations to the emergency department after electrical injury with a management protocol. *Postgrad Med J.* 2002;78(919):283-285. **(Prospective; 212 patients)**
21. Bailey B, Gaudreault P, Thivierge RL. Cardiac monitoring of high-risk patients after an electrical injury: a prospective multicentre study. *Emerg Med J.* 2007;24(5):348-352. **(Prospective; 134 patients and 31 controls)**
37. Hunt JL, McManus WF, Haney WP, Pruitt BA Jr. Vascular lesions in acute electrical injuries. *J Trauma.* 1974;14(6):461-473.
55. Cherington M, Kurtzman R, Krider EP, Yarnell PR. Mountain medical mystery: unwitnessed death of a healthy young man, caused by lightning. *Am J Forensic Med Pathol.* 2001;22(3):296-298. **(Case report)**
76. Gupta KL, Kumar R, Sekhar MS, Sakhuja V, Chugh KS. Myoglobinuric acute renal failure following electrical injury. *Ren Fail.* 1991;13(1):23-25. **(Retrospective; 8 patients)**
77. Gómez R, Cancio LC. Management of burn wounds in the emergency department. *Emerg Med Clin North Am.* 2007;25(1):135-146. **(Review)**
103. Chen EH, Sareen A. Do children require ECG evaluation and inpatient telemetry after household electrical exposures? *Ann Emerg Med.* 2007;49(1):64-67. **(Guideline review via MEDLINE literature search)**

## CLINICAL RECOMMENDATIONS

*Designed for use in every-day practice*

**Use The Evidence-Based Clinical Recommendations On The Reverse Side For:**

- Discussions with colleagues
- Developing hospital guidelines
- Posting on your bulletin board
- Preparing for the boards
- Storing in your hospital's library
- Teaching residents and medical students

**Emergency Medicine Practice subscribers:** Are you taking advantage of all your subscription benefits? Visit your free online account at [ebmedicine.net](http://ebmedicine.net) to search archives, browse clinical resources, take free CME tests, and more.

**Not a subscriber to Emergency Medicine Practice?** As a subscriber, you'll benefit from evidence-based, clinically relevant, eminently usable diagnostic and treatment recommendations for everyday practice. Plus, you'll receive up to 192 *AMA PRA Category 1 Credits™*; 192 ACEP Category 1 credits; 192 AAFP Prescribed credits; and 192 AOA category 2B CME credits and full online access to our one-of-a-kind online database. Visit [ebmedicine.net/subscribe](http://ebmedicine.net/subscribe) or call 1-800-249-5770 to learn more today.

**Questions, comments, suggestions?**

To write a letter to the editor, email: [JagodaMD@ebmedicine.net](mailto:JagodaMD@ebmedicine.net).

For all other questions, contact EB Medicine:

Phone: 1-800-249-5770 or 678-366-7933

Fax: 1-770-500-1316

Address: 5550 Triangle Parkway, Suite 150 / Norcross, GA 30092

E-mail: [ebm@ebmedicine.net](mailto:ebm@ebmedicine.net)

Thank you for purchasing an  
*Emergency Medicine Practice* article.

Your article includes CME Credits at no additional charge. **You have 2 options to receive credit:**

1. Go to [www.ebmedicine.net/CME](http://www.ebmedicine.net/CME) and click the title of the article you purchased.
2. **Mail or fax** the Answer & Evaluation Form on the next page to EB Medicine at the address or fax below.

Please contact us at 1-800-249-5770 or [ebm@ebmedicine.net](mailto:ebm@ebmedicine.net) if you have any questions. We are happy to help!

## Emergency Medicine Practice CME Answer & Evaluation Form

Please print the following information clearly:

Title of Article: \_\_\_\_\_

Name: \_\_\_\_\_

Address: \_\_\_\_\_

Phone number: \_\_\_\_\_

E-mail address (required): \_\_\_\_\_

*Please write your email address clearly. Certificates will be sent by email.*

*Check here if you need your certificate mailed:*

**Accreditation:** Please see the article for accreditation information.

**Earning Credit:** To receive credit for this issue, please mail this completed form to 5550 Triangle Pkwy, Ste 150 / Norcross, GA 30092 or fax to 770-500-1316. You must complete both the post-test and Evaluation Form below to receive credit. Results will be kept confidential. CME certificates will be emailed to each participant scoring higher than 70% (please check the box above if you need your certificate mailed). Alternatively, you can take the CME test online at [www.ebmedicine.net/CME](http://www.ebmedicine.net/CME). If you have any questions, please call 1-800-249-5770 or e-mail [ebm@ebmedicine.net](mailto:ebm@ebmedicine.net).

**Subscribing:** *Emergency Medicine Practice* subscribers receive 12 monthly print issues, 48 CME credits per year, and full online access to searchable archives, CME testing, and 144 additional CME credits. To subscribe, call 1-800-249-5770 or enter **Promotion Code AFE to save \$50** at <http://ebmedicine.net/subscribe>. Subscribing is optional and you are under no obligation. You can receive CME credit for this article whether you choose to subscribe or not.

Please fill in the appropriate box for the correct answer for each question.

The test questions appear at the end of the issue. Each question has only one correct answer. If there are fewer questions on your issue than listed here, leave the additional questions blank. Please make a copy of the completed answer form for your files and return it to EB Medicine at the address or fax number below.

- |    |     |     |     |     |     |     |     |     |     |     |     |
|----|-----|-----|-----|-----|-----|-----|-----|-----|-----|-----|-----|
| 1. | [a] | [b] | [c] | [d] | [e] | 9.  | [a] | [b] | [c] | [d] | [e] |
| 2. | [a] | [b] | [c] | [d] | [e] | 10. | [a] | [b] | [c] | [d] | [e] |
| 3. | [a] | [b] | [c] | [d] | [e] | 11. | [a] | [b] | [c] | [d] | [e] |
| 4. | [a] | [b] | [c] | [d] | [e] | 12. | [a] | [b] | [c] | [d] | [e] |
| 5. | [a] | [b] | [c] | [d] | [e] | 13. | [a] | [b] | [c] | [d] | [e] |
| 6. | [a] | [b] | [c] | [d] | [e] | 14. | [a] | [b] | [c] | [d] | [e] |
| 7. | [a] | [b] | [c] | [d] | [e] | 15. | [a] | [b] | [c] | [d] | [e] |
| 8. | [a] | [b] | [c] | [d] | [e] | 16. | [a] | [b] | [c] | [d] | [e] |

Please take a few moments to complete this Evaluation Form. Your opinions will ensure continuing program relevance and quality.

Response codes: 5=strongly agree; 4=agree; 3=neutral; 2=disagree; 1=strongly disagree

1. \_\_\_ The overall activity content was pertinent to my needs and expectations.
2. \_\_\_ The information was presented in an impartial and unbiased manner.
3. \_\_\_ I learned information that will enhance my professional effectiveness.
4. \_\_\_ Adequate faculty disclosure was given.
5. \_\_\_ The test questions were clear and appropriate.
6. \_\_\_ The information presented in this CME quiz was objective, balanced, and of scientific rigor.
7. \_\_\_ The authors were NOT biased in their discussion of any commercial product or service.
8. \_\_\_ The content in this activity is useful in my everyday practice.
9. \_\_\_ The first CME objective (listed on the cover of the article) was met for this activity.
10. \_\_\_ The second CME objective (listed on the cover of the article) was met for this activity.
11. What clinical information did you learn that was of value to you? \_\_\_\_\_
12. How did the clinical information you learned impact positively or change the way you care for your patients? \_\_\_\_\_
13. For future activities, what personal professional gap would you like us to fill? \_\_\_\_\_
14. What do you like MOST about *Emergency Medicine Practice*? \_\_\_\_\_
15. What do you like LEAST about *Emergency Medicine Practice*? \_\_\_\_\_
16. Please provide any additional comments. \_\_\_\_\_