

Definition

Ectopic – a pregnancy in which the fertilized ovum implants in a location other than the fundus or body of the uterus.

- Tubal ectopics – account for approximately 95% and are located within the ampullary or isthmic portions of the fallopian tube
- Non tubal ectopics – account for approximately 5% comprising interstitial (located within the intramural part of the fallopian tube) cervix, C section scar, ovarian and abdominal

Heterotopic – an intrauterine and extrauterine pregnancy occurring simultaneously.

- The exact incidence is not known but is estimated to be approximately 1 per 30000 in natural conception pregnancies
- The incidence (particularly ovulation induction) may be as high as 1 per 100 in assisted reproduction pregnancies. As such these patients should undergo assessment for ectopic pregnancy even if an intrauterine pregnancy (IUP) is identified

Ectopic pregnancy accounts for approximately 2% of all pregnancies however the prevalence among pregnant patients presenting to emergency departments with first trimester pain and/or PV bleeding is approximately 6-16% (3). It is the most common cause of pregnancy related mortality in the first trimester (Radiographics 2008).

Risk Factors

A number of factors have been associated with an increased likelihood of ectopic pregnancy. However of note risk factors are only identified in approximately 50% of cases (6 KEMH)

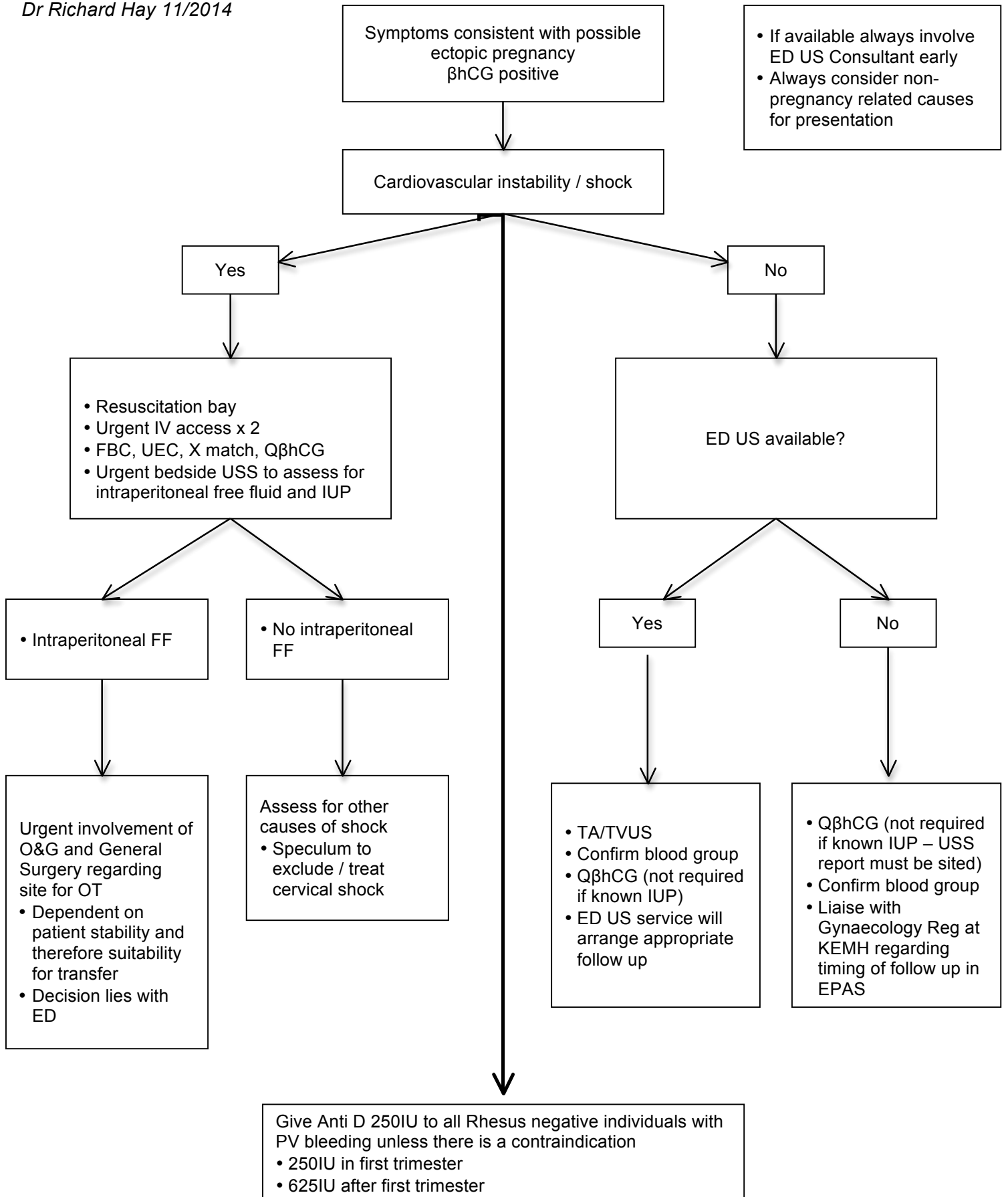
- Previous ectopic
- Tubal surgery
- IUCD (newer devices not thought to be associated with increased risk)
- History of infertility
- Previous PID
- Smoking
- Assisted reproduction
- Multiple sexual partners

Symptoms

- Typical triad of PVB, abdominal pain, amenorrhoea
- Should always be considered in women of reproductive age with abdominal pain, dizziness/syncope, shoulder tip pain

Signs

- Variable can range from an unremarkable examination to shock



QβhCG: quantitative β human chorionic gonadotropin; TAUS: transabdominal ultrasound; TVUS: transvaginal ultrasound; IUP: intrauterine pregnancy; O&G: Obstetrics & Gynaecology; EPAS: early pregnancy assessment service.

Note – this guideline applies to Sir Charles Gairdner Hospital Emergency Department that has Diploma of Diagnostic Ultrasound qualified Consultants providing a diagnostic ultrasound service.